

WEATHER

	Min.	Max.	Prob.
Wednesday, July 28	53	80	0.08
Thursday, July 29	50	78	0.00
Friday, July 30	52	78	0.00
Saturday, July 31	51	76	0.08
Sunday, Aug. 1	47	81	0.00
Sunday, Aug. 1	47	81	0.00
Tuesday, Aug. 3	61	78	0.00

By H. K. L.

The Chelsea Standard

ONE HUNDRED-SECOND YEAR—No. 7

12 Pages This Week

CHELSEA, MICHIGAN, THURSDAY, AUGUST 5, 1971

15c per copy

SUBSCRIPTION: \$4.00 PER YEAR

CHS Band Preparing for Week of Camp

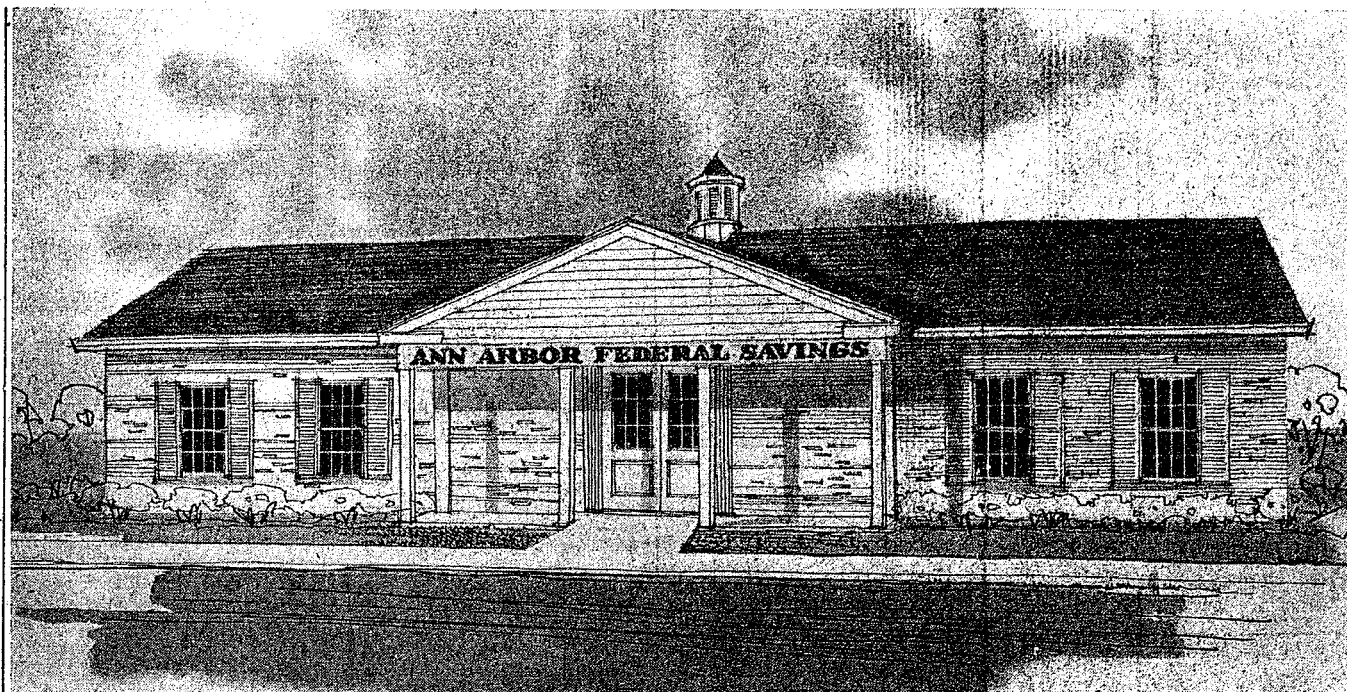
One hundred thirty-three members of the Chelsea High school band are getting ready for the week-long band camp which begins Aug. 15 and will be held at Maplehurst near Traverse City.

Prior to the camp, a meeting will be held Tuesday, Aug. 10, 7:30 p.m. in the high school auditorium.

All campers, and their parents are urged to attend the meeting where camp procedures, policies and rules will be discussed. The new assistant director and the band camp chaperones, Mr. and Mrs. Ed Lahon, Mr. and Mrs. Robert Schreier, Mr. and Mrs. Carol Buck, Mr. and Mrs. Frank Sweeney, and Mr. and Mrs. David Winans will be introduced at that time.

According to Warren J. Mayer, band director, those planning to attend the camp must return their camp physical examination forms to Merkel's Furniture Store or to Mayer by Aug. 7.

Mr. and Mrs. Donald Pierson are this year's camp directors. Mary Ann Merkel will be the camp nurse.



NEW CHELSEA BRANCH: Ann Arbor Federal Savings told plans today to build this new branch office in Chelsea. The red brick Colonial styled building will be located at the intersection of Old US-12 and S. Main St., and will contain 2,000 square feet

of first floor service area. Donald E. Nissle, at present a loan officer for Ann Arbor Federal, will be manager of the new branch office when it opens later this fall.

Ann Arbor Federal Savings Will Open Chelsea Branch Office

Expect To Open in Late Fall On Site Near Stop & Shop

Ann Arbor Federal Savings has announced the opening of a Chelsea branch office later this year.

A red brick Colonial style building with 2,000 square feet of first floor service area will be located on a 1 1/4-acre site near the intersection of M-52 and Old US-12, just south of the Stop & Shop market.

Four inside teller windows and a drive-in window will provide Chelsea area residents with a full line of service, including the orig-

inating and closing of mortgages, safe deposit boxes, travelers checks and other services offered by Federal Savings and Loan.

Roy E. Weber, president of Ann Arbor Federal, said in announcing the opening, "We are very pleased to be able to extend our services in the Chelsea area. Many of our existing customers are from the Chelsea area, and we feel we'll be able to give them better service in savings facilities, home mortgages, and home improvement loans."

Manager of the new office will be Donald E. Nissle, who has been with Ann Arbor Federal Savings as a loan officer for several years. Nissle received a Bachelor of Business Administration degree from the University of Michigan in 1955 and served in the U.S. Navy as an officer from 1956 to 1962.

A staff of three tellers will assist Nissle in the Chelsea office. "I am looking forward to working in Chelsea," Nissle said. "I intend to bring the special kind of service to this office our customers have come to expect from Ann Arbor Federal Savings."



DONALD E. NISSELE



ROY E. WEBER

Bookkeeping For School Computerized

The computer is taking over the bookkeeping for the Chelsea School District this year, according to Business Manager Fred Mills.

Within three weeks to a month all checks, books and financial reports will have been switched to a computerized system, saving time in their preparation, and producing more timely reports, Mills said.

The school district has been using computers for about three and one-half years now, for such things as payroll, bus scheduling and reporting, and the individual schools have used them for class scheduling, attendance records keeping, and for high school and junior high report cards.

During the first quarter of the year both computerized and hand-posted books will be kept. The parallel bookkeeping system will serve as a check on the computer's efficiency. If all goes well, the hand-kept books will be discontinued in November or December, Mills stated.

In preparation for the change in the accounting system, Mills took an intensive two-week course in Public School Fund Accounting at Houghton Technical University in Houghton, this summer.

The computer involved in the operation is owned by the Washtenaw Intermediate District, and is used by all schools in the system.

Named to Post on Library Board

Mrs. Frederick Belser, 216 Park St. has been appointed by the McKune Library Board to the library board of trustees. Mrs. Belser will fill the unexpired term of Mrs. Lee Ferguson who resigned due to poor health.

Mrs. Anne Lambertson Belser was born in Chelsea, and graduated from Chelsea schools. She attended Olivet College and Western Michigan University.

Mrs. Belser's family has always been interested in the Chelsea library, and she has worked there as a volunteer for a number of years. She is the mother of four.

Court Action Probable After Tax Commission Ruling on Assessments

The refusal of the State Tax Commission to lower the total property assessments of six Washtenaw county townships last week will probably send Scio township into a legal battle in Circuit Court, according to F. W. Petring, Scio township supervisor.

The six townships, including Scio, had filed appeals with the State Tax Commission stating that they had been discriminated against by the county when the tax equalization figures were established.

On July 29, the Tax Commission issued a statement saying that they found insufficient evidence to indicate that any Washtenaw township had been discriminated against.

The Commission's denial of the appeals left the door open for the townships to file suit in Circuit Court.

Following the Monday night meeting of the Scio township board, Township Supervisor F.W. Petring said, "I recommended and the board agreed, that we should pursue this matter further. Unless our attorneys find that the costs are way out of proportion to the possible gain, we will file suit." Petring added that the township attorneys have been instructed by the board to determine what steps should be taken.

According to Petring, Scio township felt that the county discriminated against it when it set a tax equalization factor of 1.04 for Scio, despite the fact that one Washtenaw county township had a lower tax ratio than Scio but had no factor applied to it.

Thirteen townships in the county had filed "protective appeals" with the tax commission. In effect, the protective appeals endorse the equalization total approved by the Board of Commissioners last April, but insure the townships that if there is any change in

the equalization figure at a later date they will also be able to take legal action.

The supervisors of Lima, Dexter and Sylvan townships had varying reactions to the findings of the Tax Commission, and to the announced intention of three townships to make further appeals.

Maurice Hoffman, Sylvan township supervisor, said that he felt that the entire matter of discrimination had been thoroughly investigated, and that the Tax Commission was justified in finding against the six townships. He added that he was concerned about the possibility of a hold up in the tax rolls if the suits were filed.

John Tandy, Dexter township supervisor, said that he was not surprised by the findings of the Tax Commission. He explained that Dexter township would not be involved in any court action unless the Circuit court found that certain townships had been over-assessed.

"If the Court found for the appellates," Tandy said, "then the County Board of Commissioners would have to make up for that loss of revenue by spreading the burden to other townships. If that were to happen we would be forced to go to court."

Edwin J. Coy, Lima township supervisor, also mentioned the need of the county to make up lost revenue by changing the equalization figures of the townships if the lawsuits result in a Circuit court finding of discrimination. He did not, however, speculate on the steps that Lima township would take if that should happen, although he did note that Lima had been one of the townships filing a protective appeal.

Of the six townships appealing to the State Tax Commission (Ypsilanti, Superior, Scio, Northfield, York and Augusta), Scio, Ypsilanti and Superior have announced that they will continue legal action.

Arson Suspected In Two Manchester Area Barn Fires

Two barn fires in the Manchester area last Friday morning brought to 17 the total number of buildings destroyed by fire in this area since January.

Detective Sgt. Harold Kerr of the Washtenaw County Sheriff's Department said that there are a great many similarities between the two Manchester fires and the

45 in the Dexter area, assumed to have been caused by arson.

Kerr said that although the fires occurred much later at night than those in the Dexter area, the fact that they broke out within the same hour, and the fact that there was no apparent cause for them pointed to arson.

Manchester Fire Chief James Kensler said that he definitely suspected arson caused the fires. "It had been raining, there were no machines in the buildings, and all the fuses had been pulled," Kensler said.

The first fire was discovered at approximately 3:20 a.m. in a barn owned by Mrs. Bertha Feldkamp, 6517 Lamb Rd. The barn and 8,000 bales of hay were destroyed. Kensler estimated the damage at \$10,000.

The second fire destroyed the barn of Russell Walker, 14521 Schlewels Rd. A tractor and a rotary tiller were also lost in the fire which caused approximately \$3,000 damage.

The fires were the first two in the Manchester area in recent years, Chief Kensler stated.

Area residents, however, are all too aware of the large number of fires in the Dexter area in the last seven months which have apparently been caused by arson.

The largest fire loss was felt by Walter Brunninger, Marshall Rd., Dexter. Four large barns full of feed and grain, a silo, a tractor and other farm implements were destroyed by the fire discovered June 17 at 10:53 p.m.

Firemen from Dexter, Saline, Ann Arbor township and Chelsea fought the blaze for five hours.

Mrs. A. Steinaway Named Outstanding Young Woman

Mrs. Anne Moore Steinaway, 27-51 McKinley Rd., has been named one of the Outstanding Young Women of America for 1971.

School Board Briefs

At a regular meeting of the Chelsea Board of Education, Monday evening, present were Storey, Smith, Straub, and Haselschwardt, Superintendent Charles Cameron, Business Manager Fred Mills, Principals Charles Lane, Alan Conklin and S. Wojcicki.

Meeting called to order at 8 p.m. by President Storey.

Minutes of the July 19 meeting approved.

President Storey reported on committee appointments for 1971-72.

President Storey outlined goals for the board for 1971-72.

1. To shorten the length of meetings to a reasonable hour by use of committee study and reports.

2. To hold a board meeting in each building during the year.

3. To have a teacher or administrator report on an area of the educational program at one meeting each month.

Motion by Straub, supported by Haselschwardt, to adopt the three goals as discussed. All ayes.

Motion by Straub, supported by Smith, to pay general fund bills of \$7,059.48. All ayes.

Motion by Haselschwardt, supported by Smith, to adopt the agenda as amended. All ayes.

Motion by Haselschwardt, supported by Straub, to accept the resignation of Miss Kathy Jacobson effective when a suitable replacement can be hired. All ayes.

Motion by Haselschwardt, supported by Smith, to sign the contract of Susan Walton for 1971-72. All ayes.

Motion by Smith, supported by Haselschwardt, to sign the contract of Mildred Beaudin for 1971-72. All ayes.

Motion by Haselschwardt, supported by Smith, to sign the contract of Sue Yager for 1971-72. All ayes.

Motion by Straub, supported by Smith, to sign the contract of Ronald Harris for 1971-72. All ayes.

Motion by Smith, supported by Straub, to sign the contract of Richard Lapanowski as assistant high school principal for 1971-72. All ayes.

The board was presented with copies of the procedure for the handling of all school funds. The report was referred to the Business, Administration and Finance Committee.

Motion by Haselschwardt, supported by Smith, not to hold the special board meeting on Aug. 16. All ayes.

The first meeting of the Board of Education in September will be held on Tuesday, Sept. 7 at 8 p.m.

Motion by Straub, supported by Smith, to adjourn. (Continued on page six)

Two Dog Bites Reported to Police Over Week-end

Two complaints of dog bites were received by Chelsea police over the week-end.

On Friday, July 30, Cyarl Dolin, 518 Arthur St. was bitten on his left calf by a dog owned by John Toon 526 Arthur St. Dolin was in the back yard of 528 Arthur St. with his two nieces when the dog ran out of the back yard at 526 Arthur and bit him.

James L. Fults, Jr., 9, of 421 Middle St. received a bite on the back of his hand at 12:10 p.m. Sunday, Aug. 1.

Fults had been petting the dog owned by Shelia and Louis Ordway, 421 Middle, when the dog bit him. The dog was chained in the back yard which is shared by and Mark, 8.

(Continued on page six)

Sunday Papers Stolen from Front Of Drug Store

On Sunday, Aug. 1, 50 copies of the Sunday Detroit Free Press were stolen from in front of the Chelsea Drug Store, 101 N. Main St. between 6 and 9 a.m.

The papers had been left in front of the store by Charles Matloff, the Free Press distributor.



MAKING PLAQUES out of tiny colored stones, cord, and lots of paste, are these bright-eyed youngsters who turned out one hot morning this summer. Pictured in the front row (many with their backs to the camera) are, from left, Kelly Borton,

Bill Merkel, Tracy Borton, and Tim Whitesall. In the second row are Barbara Boylan, helper, Karen Kern, Jody Bennett, Todd Otto, and Scott Otto. The Summer Recreation Program ended last Friday but memories the fun-filled mornings linger.



THE TWISTED REMAINS of the 1966 Chrysler hardtop in which Kellene Murphy, 16 and Matthew Blackwell, 16-months, were riding when it was struck by a train lie along the railroad track

near the Hoppe-Garvey Rds. crossing. Both Kellene and Matthew died as a result of the crash which occurred at 11:55 a.m. Tuesday.

Two Young People Die in Train-Auto Crash Tuesday

A Chelsea teen-ager and a 16-month-old baby died following a car-train crash at the Garvey and Hoppe Rds. railroad crossing Tuesday, Aug. 3, at 11:55 a.m.

Kellene Murphy, 16, daughter of Mr. and Mrs. David Murphy, 418 Wellington, the driver of the car, was dead on arrival at University Hospital in Ann Arbor.

Matthew Blackwell, 18-month-old son of Sheri Blackwell, 513

Wellington, died at 9:15 a.m. Wednesday morning in Mott Children's Hospital, Ann Arbor, of extensive head injuries.

According to Sgt. Thomas Kelly of the Washtenaw County Sheriff's Department, Kellene Murphy had been driving north on Hoppe Rd. at the time of the accident. She either didn't stop at the crossing or pulled out in front of the on-coming west-bound train. There

are no signal lights at the crossing. According to Kelly, the engineer stated that he didn't see the car coming, and had no opportunity to stop. The train was going 48 to 49 mph at the time of the impact, the deputy said.

The 1966 Chrysler hardtop was pushed approximately 20 yards down the track and was finally lodged against a railroad signal box at the side of the track.



Washington Report by Congressman MARVIN L. ESCH

The University of Michigan is playing a key role in a "spy in the sky" campaign to eradicate corn blight. The corn blight watch over 200 selected sites in Michigan and seven other midwest states is conducted jointly by the National Aeronautics and Space Administration (NASA) and the Department of Agriculture.

This corn blight campaign includes the use of NASA planes operating at high altitudes utilizing remote aerial sensing techniques in co-ordination with special ground observation. The aerial surveillance phase is being conducted in conjunction with the University of Michigan's Institute of Science and Technology's (IST) C-47. The threat that hangs over corn growers this year could become serious without such special precautions.

In 1970, major production losses occurred in these same midwestern corn belt states. To avoid a recurrence of these losses this plan was devised to utilize not only aerial surveillance, but USDA personnel as well with responsibility for the ground watch part of the program carrying out plant by plant inspections on the selected sites.

The first phase of this experiment took place in April when the University of Michigan C-47 provided the black and white scale photography which was used as an enumeration device for the original field interviews and for orientation of the analysts. The

University of Michigan's role continues between now and September on a bi-weekly basis by conducting overflights of the test sites. These provide the necessary data of the study area and are later processed at Purdue University's Laboratory for the Application of Remote Sensing.

The information obtained within the total framework of this project could have a significant impact on all aspects of corn production. So far, observers have reported only nominal increases in numbers compared with last year, but the real extent of blight damage often depends on other factors like the weather. The USDA and NASA experiment this year not only monitors development of blight damage, but there are other long range goals that include: 1.) evaluating the technical means of assessing the level of infection in the corn belt; 2.) evaluating the capability of remote sensing to assess the probable impact on corn production; and 3.) evaluating results for feasibility of application to similar situations that might occur in the future.

As a member of the Science and Astronautics Committee that deals with NASA and as the U.S. Representative for Ann Arbor, I am particularly pleased that the University of Michigan is playing such a key role as an arm of the National Aeronautics and Space Administration in this effort which undoubtedly will have far reaching effects for the years ahead.

Uncle Lew from Lima Says:

DEAR MISTER EDITOR:

I thought when scientists come up with a mechanic pig mama a few years back that we had gone as far as we could go, technical speaking. But just when a feller starts thinking that way, some-

thing comes along that shows marvels never cease.

Saturday night at the country store, Zeke Grubb give a report on an invention that puts em all in the shade, the 40 hour week, the moon buggies, the music ferns to lay-by, all of em. Zeke said it looks like we got the answer to the question the first man ask when he set down aside the first cow and started to milk.

What to do about that tail? Zeke said he had saw buried back in one of his farm journals last week where this feller in Florida had been give a patent for a cow tail holder. Zeke allowed it was one of the most important news items in the history of the world, and he was terrible shocked it wasn't on the front page. Zeke said the papers was full of stuff about President Nixon going to China to play Ping Pong so he won't get clonked by the Vice President's golf balls, when they could be telling folks about the cow tail holder.

The fellers was true excited about Zeke's report. Bug Hookum said folks have had about as good luck controlling Bossie's tail as the Government has with Jap imports. Ever time a feller figured a angle on that tail, the old gal come up with two new ways to hit him with it. Bug said he has tried everything from tying a brick to Bossie's tail to tying the tail to the barn door. The cow would overcome gravity and flap the brick up side your head, or she would get upset cause her tail was stuck and kick over the milk bucket or step in it.

That was it, broke in Zeke, the Government patent said this new cow tail holder "holds the tail firmly without disturbing the composure of the animal." That was the wonder of it, said Zeke. It clomps around the tail and the cows leg and jest holds the tail out of the way.

Clem Webster said he had his doubts about the future of the cow tail holder. He said milking is on the automatic now in the first place, and in the second place it wouldn't surprise him to see scientists come up with a detailed cow like they done with her horns. Inventions, allowed Clem, is like the feller that allus was a hour late and a dollar short. Clem said if he was to figger a way to grow a square toger it would be right after some feller come out with round sandwich bread.

But the fellers was full agreed,

Howell Livestock Auction

The Wise Owl Says Ship to Howell
SALE EVERY MONDAY, 2 p.m.
Phone 546-2470, Bim Franklin
Mason 677-8941

Market Report for Aug. 2

CATTLE
Good to Choice Steers, \$31 to \$33
Good-Choice Heifers, \$29 to \$31
Fed Holstein Steers, \$25 to \$28.50
U.S. Steers, \$26 and down.

COWS
Heifer Cows, \$22 to \$25
U.S. Commercial, \$21 to \$23.50
Canner-Cutter, \$18 to \$21
Fat Beef Cows, \$18 to \$20.50

BULLS
Heavy Boloxna, \$26 to \$28
Light & Common, \$26 and down.

CALVES
Prime, \$40 to \$45
Good-Choice, \$35 to \$40
Heavy Discons, \$40 to \$50
Cull & Meds, \$35 to \$40

FEEDERS
300-400 lb. Good to Choice Heifers, \$24 to \$26
400-700 lb. Good to Choice Steers, \$22 to \$24
300-400 lb. Holstein Steers, \$28 to \$31
500-800 lb. Holstein Steers, \$25 to \$28
Commercial-Meds, \$25 and down.

SHEEP
Woolled Slaughter Lambs:
Choice-Prime, \$29 to \$31
Good-Utility, \$26 to \$29
Slaughter Ewes, \$6 to \$9
Feeder Lambs, all weights, \$24 to \$27

HOGS
200-250 lb. No. 1, \$20.50 to \$21.25
200 lb. and up, \$19.50 to \$20.50
240 lb. and up, \$18 to \$19.50
Light Hogs, \$18 and down.

Sows
Farrow Light, \$16 to \$17
300-500 lb., \$15.50 to \$16
500 lb. and up, \$16 to \$16.50

Boars and Stags
All Weights, \$14 to \$16

Feeder Pigs
Per Head, \$8 to \$12.50

HAY
1st Cutting, 60c to 75c
2nd Cutting, 75c to \$1.00

STRAW
Per Bale, 45c to 55c

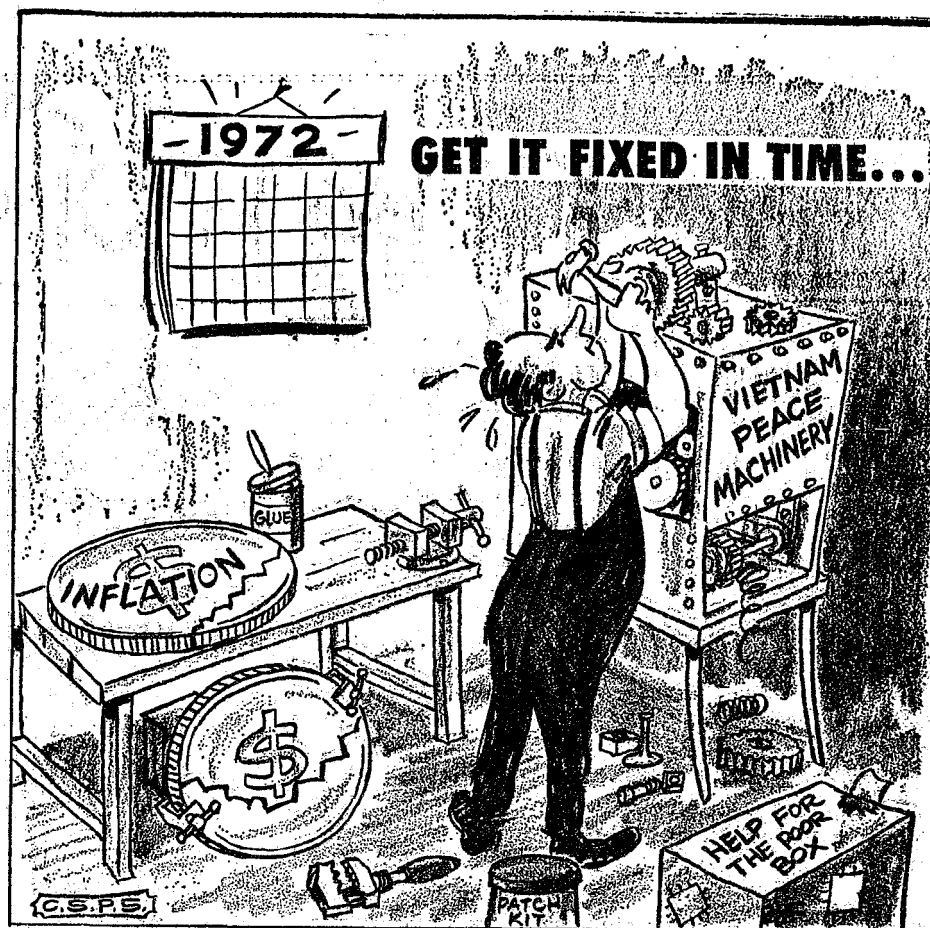
COWS
Tested Dairy Cows, \$300 to \$425
Tested Beef Type Cows, \$250 to \$300

Established 1871 **The Chelsea Standard** Telephone GR 5-3531
Excellence Award By Michigan Press Association
1951-1952-1960-1964-1965-1966
Walter P. Leonard, Editor and Publisher

Published every Thursday morning at 800 North Main Street, Chelsea, Mich. 48118, and second class postage paid at Chelsea, Mich., under the Act of March 3, 1879.

ADDRESS CORRECTION REQUESTED
Subscription Rates (Payable in Advance)
In Michigan: One Year \$4.00
Six Months \$2.25
Single Copies \$.15
Outside Michigan: One Year \$6.00
Six Months \$3.50
Single Copies \$.20
Service men or women, anywhere, 1 year \$4.00

MEMBER **NATIONAL NEWSPAPER**
National Advertising Representatives
MICHIGAN NEWSPAPERS, INC.
257 Michigan Ave.
East Lansing, Mich. 48823
Association Founded 1888



★ MICHIGAN MIRROR ★

By Elmer E. White, Secretary, Michigan Press Association

"Court Revamp Studied"

What could be one of the most important assignments in his new spon on the Michigan Supreme Court was handed to former Gov. G. Mennen Williams.

He was named head of a new committee to bring Michigan's court procedures into the latter part of the 20th century. The technical title is the Court Procedures Technology Committee. It was created by Chief Justice Thomas M. Kavanagh.

Kavanagh has said he wants the committee to report back to him by January so that he may incorporate its findings into his annual report to the legislature.

"The administration of Justice in the State of Michigan, as elsewhere throughout our country, is typified by courts that are under financed, poorly housed, undermanned and overworked," stated Kavanagh.

"Obsolete procedures have added to the burden of the courts already overburdened with an increasing amount of litigation," he said. "What our system needs, in the words of the President's Commission on Law Enforcement and Administration of Justice, is 'a willingness to re-examine old ways of doing things, to reform itself, to experiment.'"

The committee, in pursuing that goal, will analyze existing court procedures and find out what can be done to give all courts the ability to operate with the most efficient procedures.

The Williams committee will search for new methods, such as state-wide computerization of court cases, new rules, new equipment and personal training to overcome the "old way of doing things."

Among the answers it hopes to provide are more efficient methods of determining attorney availability for trial, assignment of cases.

Mister Editor, that a cow tail holder that worked 200 year ago would of done no end of good for civilization, special the church. Old Bossie's tail, claimed Clem, probably has caused more folks to lose their religion than anything short of a preacher that lets his sermon run 10 minute over.

Yours truly,
Uncle Lew.

FARMERS GET SOME OF U.S.D.A. APPROPRIATIONS

Farmers only received about 67 percent of United States Department of Agriculture appropriations in 1970. Out of \$12.5 billion spent by the government under the heading of "agriculture" that year, only \$8.3 billion directly benefited farmers by supporting farm income, according to farming experts.

es, record-keeping, jury availability, processing of estates and maintenance of payments to friends of the court.

Since the worst problem now exists in and around Detroit, the first investigation will be conducted there, Kavanagh said. At the same time, he said, computer studies are already in progress in Genesee, Kalamazoo, and Washtenaw counties as well as the city of Southfield.

"Motorboats Proliferate"

If it seems that you've seen more motorboats than ever in Michigan waters this year, the secretary of state's office says you're right. There are more than ever.

But chances are you'd be wrong if you were asked to name the year in which the second highest number of motorboats were registered in the state.

Give up? It was 1938. Secretary of State Richard Austin says the registrations of motorboats passed the 446,000 mark by the end of June. But the previous high before this year was 437,000 back in 1938.

Nearly 500,000 motorboats will be registered in the state before the summer is out, says Austin. And he has a sneaking suspicion there are already more than 500,000 boat in the state that some owners have been lazy enough, forgetful enough or just unwilling enough to part with the \$5 registration fee to license their boats.

"No matter how many times we say it," he says, "there are some boat owners who just don't seem to get the message or choose to ignore it. It's a physical impossibility for sheriff patrols to inspect every boat in all of Michigan's more than 11,000 inland lakes, and scores of rivers, brooks and streams."

"But the owners of those boats that are not registered risk several penalties and unnecessary embarrassment for failure to comply."

"Mink Coats Grown"

Along with millions of cars, millions of quarts of cherries, peaches and other fruits, and millions of dollars worth of tourists,

related items and services produced in Michigan last year, there were 3,000 mink coats "grown" in the state.

Those 3,000 coats came from a total of 110,000 mink which were raised for their fur. It takes an average of 37 mink pelts to make one full-length coat, according to the State Agriculture Department.

And if you're wondering why mink coats cost so much, the department says an efficient mink ranch can produce mink for a cost of about \$12 per pelt. That means that before it leaves the backs of those \$7 mink, the coat is already worth \$444.

The time the mink farmer, the garment industry and stores cover expenses and profit, the cost grows greatly.

The high price takes toll. The U. S. produced 85 percent of the world's ranch grown mink 20 years ago. It now produces only 20 percent.

Richard Smith of 238 Harrison St., hit the first hole-in-one recorded at Inverness Country Club in two years Wednesday, July 19, while playing with his son, Kevin. Witnesses to the feat were Louis "Buck" Abell and his wife, and Emma Adams.

JUST REMINISCING

Items Taken from the Files of The Chelsea Standard

4 Years Ago...

Thursday, Aug. 10, 1967—Topping 18 other entrants, M. Chelsea's first Recreation Commission Tennis Tournament in play which ended Tuesday were Matt Heydlauff, finalist in the 7- and 8-year-old group, Ed Paul, runner-up; Mark Pennington, finalist in the 9- and 10-year old division, Mike Tobin, runner-up; Donice Bussler, runner-up in the girls 12 and under group, Debbie Bertke, finalist in the girls division, Jeff Bussler, finalist in the boys 11- and 12-year-old group, and David Layner, runner-up in the older boys group.

The Rev. Theodore P. Brueckner of Beaverton, Ore., son of the Rev. and Mrs. M. W. Brueckner of Fletcher Rd. is returning to Chelsea this week-end to conduct the fifth in a series of Centennial services at Zion Evangelical Lutheran church Sunday, Aug. 13.

Chelsea 4-H members selected to compete in the State Show to be held at Michigan State University in August were Lynda Koch, Cheryl Trinkle, Mary Nietsch, Helen Wolski, Elaine Bristle, Jamie Alder, Mike Bristle, Duane Bycraft, Char Powers, Cheryl Grau, Mike Graff, Judy Grau, Colleen Haab, Kenny McCalla, Howard McCalla, Karen Basset, Vicki Schoefoom, Mary Wood, Holly Powers, and Wendy Bradbury. Winners were selected at the Washtenaw County 4-H Youth Show held last week at the Rural Activities Center on Ann Arbor-Saline Rd.

Richard Smith of 238 Harrison St., hit the first hole-in-one recorded at Inverness Country Club in two years Wednesday, July 19, while playing with his son, Kevin. Witnesses to the feat were Louis "Buck" Abell and his wife, and Emma Adams.

14 Years Ago...

Thursday, Aug. 8, 1957—Dolores Annette Buehler, daughter of Mr. and Mrs. Verne Buehler, 203 Lincoln St., was one of a class of 35 who graduated Saturday afternoon from the Ann Arbor St. Joseph Mercy Hospital Unit of the Mercy School of Nursing in Detroit. She is now employed at St. Joseph Mercy Hospital, Ann Arbor.

Mrs. P. G. Schaible, Jr., president of the Jaycee Auxiliary, and Mrs. Homer Kuhl attended the Chelsea Community Fair Association board meeting Tuesday evening. They received approval to promote special recognition for the

Community Fair queen, customarily selected on the last evening of the annual fair.

Marilyn Tobias, daughter of Mr. and Mrs. Elmer Tobias of Warren, daughter of Mr. and Mrs. Arthur Warren of 918 S. State St., Ann Arbor, are the Junior Red Cross delegates selected to represent Washtenaw County at the Junior Red Cross Leadership Training Center in Williams Bay, Wisc., Aug. 13-23.

Robert Reed, Chelsea, was credited with being among the first to help save the life to Mr. Maxine Sebott of Vandercook Lake, when she was in danger of drowning 80 feet from shore Saturday evening at Portage Lake.

Mrs. Duane Luick, Chelsea, was named secretary-treasurer of the Frey family at the annual reunion, held Sunday.

24 Years Ago...

Thursday, Aug. 7, 1947—Frank Ames, editor of The Dexter Leader, was the speaker at the regular meeting of the Kiwanis Club, which was held at the Municipal building Monday evening.

The annual Croman family reunion was held at the county park at Clear Lake on Sunday, Aug. 3, with 55 present. Floyd Rowe was elected president, while Mrs. Elton Musbach was elected secretary-treasurer. Vice-president for the coming year is Verne Parks of Jackson.

Sixty-six members of the Schlicht-Feldkamp families met at the Clear Lake county park for their annual reunion. Officers elected were Miss Cora Haas, Ann Arbor, president; Wilbert Buss, Manchester, vice-president; Mrs. Gladys Hines, secretary; and treasurer, Doris Buss.

34 Years Ago...

Thursday, Aug. 5, 1937—Miss Eileen Adam, a member of the Class of 1937 at Chelsea High school, has been awarded a Freshman Scholarship at the University of Michigan. This is one of 60 scholarships awarded by the Board of Regents in the state of Michigan.

L. J. Kalmbach, son of Mr. and Mrs. John Kalmbach of Chelsea, has been elected to the board of directors of the Lincoln National Life Insurance Co. of Fort Wayne, Ind. Kalmbach is presently second vice-president of the company, in charge of the reinsurance department. He has been associated with the firm for the past 12 years.

The Chelsea Dining Room, operated by Mr. and Mrs. E. A. Tisch, in the Vogel Building, E. Middle St., was opened to the public on Sunday. Mr. and Mrs. J. E. Weber were the first customers at the new dining room on Sunday.

At the annual meeting of the Black Top Delaine Merino Sheep Breeders' Association held Friday, July 30 at East Lansing, W. C. Hendee, Pinckney, was elected president. Elba Gage, of Chelsea, was elected vice-president, while George E. Haist, also of Chelsea, will serve as secretary-treasurer for the coming year.

Chelsea's new federal building at Main and South Sts. will be occupied by the post office, and open for business on next Monday morning. It was announced this week. In addition to the regular force, Joseph D. Wright will be fireman and caretaker, and Ed K. Miller will be the chairman and mail messenger at the new post office.

All You Need Is Your
Lens Prescription
WINANS OPTICAL
PHONE 475-1233
114 N. Main (in Sylvan Hotel) Chelsea, Mich.
Can Do the Rest!
QUALITY FRAMES and LENSES
Use your frames if you care to.
DAVID WINANS, Optician
(Formerly with Johnston Optical)

Michigan Bell Report to Customers

A clarification of facts concerning your telephone service and usage

The cost of your long distance calls will not be affected by the new proposed rates.

Don't expect the new proposed rates to make a big difference in your phone bill. Because they won't. The new rates would apply mainly to your basic rate and would not in any way affect the charges for long distance calls within Michigan. For example, you can make a one-minute call from Flint to Traverse City for 30¢ or less (depending on whether you dial direct). The same call would cost exactly the same under the new rate proposal.

But, as always, the more toll calls you make, the more you pay.

Though the new rate proposal will not increase long distance rates, your bill will still go up or down in direct proportion to the number and length of such calls. So, to a great extent, the size of your bill is up to you. You can lower it by making fewer and briefer long distance calls, if you choose.

If you have any questions, please don't hesitate to call your Michigan Bell Business Office.

We want to help.

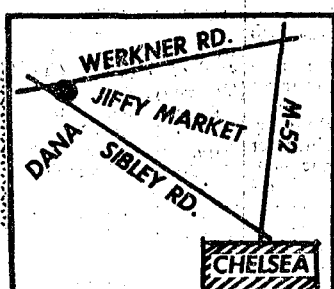


Michigan Bell

IF YOUR ROOF IS HURTIN' Call Burton!

- ★ Old and New Roofs
- ★ Hot Tar and Metal Roofs
- ★ Aluminum Siding
- ★ Aluminum Awning and Storm Doors and Windows
- ★ Seamless Aluminum Eaves Troughs and Down Spouts
- ★ Mobile Home or Trailer Skirting

COOPERATIVE ROOFING & SIDING CO.
Call 662-5900 or 662-3288
Evenings Call Burton Rathbun, 663-0754



HOURS:
7 AM - 10 PM
OPEN 7 DAYS A WEEK!
PHONE 475-5701

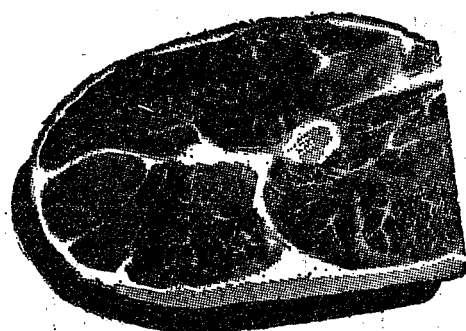
Jiffy market

COMPLETE
SUPER
MARKET

BIG ENOUGH TO SERVE YOU.....SMALL ENOUGH TO KNOW YOU!

Corner of SIBLEY & WERKNER RDS.....CHELSEA, MICHIGAN

All Prices Effective Thursday, Aug. 5, 1971, through Sunday, Aug. 8, 1971



U. S. D. A. GRADE CHOICE

ROUND STEAK
\$1.09
lb.

TENDER, DELICIOUS

CUBE STEAKS
\$1.19 lb.

AGAR

CANNED HAM
5-lb. can \$3.99

Sliced at No Charge.
A Popular Favorite!

CAMELOT

BACON
Crown Quality
65¢ lb.

ECKRICH

Smok-Y-Links
10-Oz. Pkg.
79¢

CONEY ISLAND

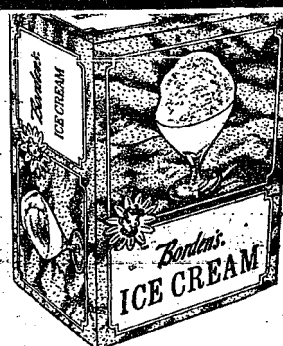
FRANKS
1-Lb. Pkg.
59¢

**FOR YOUR
FREEZER
CHOICE
SIDES
QUARTERS**

FRESH

**BEEF
LIVER**
45¢ lb.

A Tasty Borden Buy!
JUMBO TREAT
Vanilla Ice Cream
99¢ gal.



MR. MINI'S FAMOUS 8-OZ.
SUBMARINE SANDWICH
Now Available
in our New
Deli Case
Only 99¢

JIFFY MARKET DELI CASE

SPECIAL!

**POTATO
SALAD**

39¢ lb.

**MACARONI
SALAD**

A Large Assortment of
BULK CHEESES - SALAMIS - SALADS

CURTISS ROYAL
MARSHMALLOWS . . . 1-Oz. Pkg. **19¢**
PURE
ORANGE JUICE . . . 1/2 Gal. Crtn. **59¢**
CHARCOAL . . . 20-Lb. Bag **\$1.19**
PURINA DOG CHOWS . . . 25-Lb. Bag **\$2.99**

SUN DEE - RISDON BROS., INC. GRADE A

YOGURT

8-Oz. Crtn.

Mandarin Orange
Red Raspberry
Strawberry

Blueberry
Plain
Apple

19¢

KRAFT FRUIT BASE DRINKS

1 GALLON MAKES 6 GALLONS

1 gal.

This is less than 42¢ per gallon.

\$2.49

ORANGE - LEMON LIME - CHERRY
LEMON - GRAPE - FRUIT PUNCH

Here's An Old-Time Favorite

Baked By Holsum

Way Baking Co. of Jackson

**KLEEN-MAID
BREAD**

Brought to you this week
at a special price
to let you try this quality bread.

Large
1 1/4-Lb.
Loaf

18¢

**COLD BEER & POP
AVAILABLE AT ALL TIMES!**

Visit our new huge walk-in, beer cooler. A complete assortment of all brands at prices you have to see to believe. Unfortunately, it is unlawful to advertise the price of beer!

DR. LANE ASPIRIN . . . 250-Count Bottle **25¢**

MEN'S POCKET COMBS . . . **9¢**

PRELL Concentrate Shampoo Large 5-Oz. Tube **89¢**

Crest or Colgate Toohpaste 3.25-Oz. Tube **49¢**

MR. BOSTON FROZEN, PRE-COOKED

FISH STICKS . . . Big 2-Lb. Pkg. **99¢**

PEPSI-COLA . . . 10-Oz. No-Return Bottles **8 pac. 85¢**

SHAMROCK MEDIUM
GRADE A

EGGS
39¢ doz.

8-OZ. BANQUET FROZEN

POT PIES
Macaroni, Cheese, Chicken,
Beef, Turkey, Tuna

15¢ ea.

SUN DEE VITAMIN D

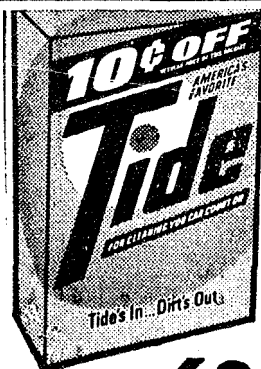
MILK

1/2 GALLON GALLON

45¢ 85¢

Try Some Today!

Leading medical and scientific opinion heartily endorses the addition of 400 units of Vitamin D to milk. Two important purposes of Vitamin D milk are to help prevent rickets and promote the development of sound teeth and bones by providing an adequate amount of Vitamin D which is necessary for the proper utilization of the calcium and phosphorus contained in milk.



69¢

FRESH HOME-GROWN

TOMATOES
29¢ lb.

FISHER'S SPANISH

SALTED PEANUTS
1-Lb. Pkg. **49¢**

**2 CYCO
POWER FUEL**

Works wonders for your outboards, power mowers, chain saws, go-karts.

49.9¢ gal.

BEWARE!

Of gas stations with bold signs and big letters that advertise gas prices . . . there is small, sneaky print add "Plus Tax." These signs are sucker traps and should be outlawed. They are also in violation of a Chelsea Village Ordinance.

MARATHON GAS PUMPS

REGULAR

31.9
Includes All Taxes

NOTE: Our Gas Prices

INCLUDE ALL TAXES

TOP QUALITY GAS!

PREMIUM

35.9
Includes All Taxes

IS IT TRUE?

That some people will actually pay 39¢ plus for regular gas and 43¢ plus for premium?

Sure, would like to have them for customers.

**MARATHON
TOP QUALITY**

MOTOR OIL

10, 20 or 30 weights

39¢ qt.

Open 7 Days A Week, 7 a.m. to 10 p.m. — Daily & Sunday Newspapers Available

Ads
Taken
Till 5 p.m.
Tuesday

IT'S EASY TO BUY-SELL-RENT- HIRE & FIND WITH

WANT ADS

Just
Call
GR 5-3581

WANT ADS

The Chelsea Standard

WANT AD RATES

PAID IN ADVANCE—All regular advertisements, 50 cents for 25 words or less, each insertion. Count each figure as a word. For more than 25 words add 2 cents per word for each insertion. "Blind" ads or box number ads, 50 cents extra per insertion. CHARGE RATES—Same as cash in advance, with 15 cents bookkeeping charge if not paid before 5 p.m. Tuesday preceding publication. Pay in advance, send cash or stamps and save 15 cents. DISPLAY WANT ADS—Rate, \$1.10 per column inch, single column width only. 5-point and 14-point light type only. No "bold" or boldface type. Minimum 1 inch. CARDS OF THANKS or MEMORIALS—Single paragraph style, \$1.00 per insertion for 50 words or less; 2 cents per word beyond 50 words. COPY DEADLINE—5 p.m. Tuesday week of publication.

FOR SALE—Wilson aluminum tennis racket, 2 months old, in good condition. Call 475-1270. -7

LADIES SUMMER WEAR

and
SPORTS WEAR
1/2 Off

DANCER'S

USED CARS

'70 Cougar, factory air
'70 Cobra 2-dr. hardtop
'70 Thunderbird, with air
'69 LTD 4-dr. with air
'69 Chev Impala
'67 Mercury 2-dr. hardtop
'67 VW
'67 Mustang
'66 Mustang
'64 Ford LTD 2-dr. hardtop
'64 Falcon 4-dr.
'60 Falcon 4-dr.

TRUCKS

'67 Ford 3/4 ton
'67 International 1/2 ton pick-up
'65 Ford 1/2 ton
'61 Ford 1/2 ton

See Us About
Demonstrators
and Driver
Education Cars

PALMER FORD

Open Mon., Wed., Thurs., Till 9:00
Chelsea GR 5-3271

ALLSTATE INSURANCE

AUTO - BOAT - COMMERCIAL
LIFE - HEALTH - HOME
Phone Even. or Week-ends for

N. H. MILES, Agent
GR 5-8334

THE BEAUTIFUL BRUTES are
here! Alouette snowmobiles.
Come see them at Hani-Co Winter
Sports, at 15901 Seymour Rd., or
call 475-7212. 8tf

WANT ADS

BOARDING, trimming, training.
Town and Country Kennels,
Jackson Rd. at Baker. NO 8-7200. 7tf

Gem Travel Trailers and Campers

PICK UP COVERS
4" ————— \$100.00
36" ————— \$179.00 and up

Triangle Sales

Chelsea 475-4502 40tf

CLOGGED SEWER

Reynolds Sewer Service

We Clean Sewers Without Digging
Drains Cleaned Electrically
FREE ESTIMATES
2-YEAR GUARANTEE
Phone Ann Arbor NO 2-5277
"Sewer Cleaning Is Our Business—
Not a Side Line" 38tf

KNAPP SHOES

For Cushion Comfort
Robert Robbins
475-7282 48tf

REAL ESTATE FOR SALE

SHARP 3-BEDROOM HOME, 2 1/2-
car attached garage on 1-acre,
Old US-12. Could go FHA.

NICE ROLLING 5-acre parcel,
trees and pond in back, in Chel-
sea area.

VERY NICE rolling 10-acre parcel
in Pinekey area, \$9,900, 20%
down, 7% land contract.

3-BEDROOM HOME, gas heat,
with easement to Rush Lake.
\$8,600 with \$2,800 down, land con-
tract.

Marshall Realty

440 Dexter-Pinekey Rd., Pinekey
Phone 878-3182
Dave, 475-7275; Evelyn, 475-8583
JoAnn, 475-7493; Elaine, 426-8619

ALCOA SIDING with Remodeling
—Since 1938. Prompt service,
professional workmanship. W. L.
Ham Davis Contractor, Ann Ar-
bor, Mich. Estimate, no obligation.
Phone (313) 663-8635. Com-
pleted work near you. -x28

FOR SALE—Wurlitzer clarinet,
2 years old, in good condition;
120 base accordion, like new; boat
trailer holds up to 600 pounds;
beautiful singing canary with
cage and stand. Call 475-8933. -7

Hearthside Yarn Shop

5450 Conway Road
Yarns, needles, accessories

Free instructions in knitting and
crocheting with follow-up assist-
ance.

Orders taken for hand-made items.
Ph. 475-2014 38tf

FORMAL WEAR

RENTAL SERVICE

Proms - Weddings - Special Events
6 different colors.

Foster's Men's Wear 48tf

WANT ADS

ROBERT PATRICK for home im-
provement, building and main-
tenance. Ph. 475-7460. 45tf

HAMMOND ORGAN teachers
wanted to teach in their own
homes. Call Grinnell Brothers, Ann
Arbor, 682-5667. 34tf

CALL FRANK for all your carpet
cleaning jobs, morning or week-
end. Needs only 3 hours to dry.
Only 10c per square foot. Phone
now for free estimate, 761-4328.
All work guaranteed. 33tf

PIANO TUNING: Chelsea and area.
Facilities for reconditioning and
rebuilding. Used piano sales; re-
conditioned grands and verticals.
E. Eklund, 426-4429. x50tf

Contractor Servicing Chelsea, Dexter and Manchester Areas

Complete Home Remodeling
Inside and Outside

Specializing in extra living space,
recreation rooms, kitchens and
paneling. Installing all aluminum
products, 5" eavestroughs, custom-
made awnings, windows and doors,
aluminum siding in many selected
colors and styles.

Please Call

DALE COOK
Chelsea 475-8363 20tf

The
SUMMER SALE
IS ON
at
DANCER'S 7

COMPLETE
\$23,900
on your lot

INCLUDES:

—976 square feet of living area

—Full basement, with laundry
facilities

—Two-car attached garage

—Three carpeted bedrooms

—11'x20' carpeted living room

—Cushioned sheet vinyl in kitchen

—Fruitwood finished Mediterranean
cupboards, with stainless
steel sink

—Hotpoint stove and refrigerator
included

—48" walnut vanity in bathroom

—Fiberglass Unitub

—Pre-finished walnut interior
doors and trim

—Pre-finished white aluminum
eavestroughs

—Concrete porches, sidewalk,
gravel drive

—2,000 well and septic allowance
included.

NO MORTGAGE MONEY
PROBLEMS HERE!

W. C. Weber
Construction Co., Inc.
12290 Jackson Rd., Chelsea, Mich.
475-2828 x8tf

Real Estate For Sale

2-BEDROOM, modern ranch type
home on 6 acres. With pond.

Call

Kern Real Estate
Phone 475-8563 -6tf

2-CYCO FUEL
For All 2-Cycle Engines

WHITE GAS

Available at
Gateway
Sports Centre, Inc. 45tf

ELECTROLUX VACUUM CLEANERS

SALES and SERVICE

JAMES COX
Ph. 428-2931 or 428-8221
Manchester



"If my wife were home — I wouldn't have had the nerve
to sell our lawnmower with a Standard Want Ad!"

WANT ADS

WORK SHOE HEADQUARTERS

Famous Red Wing Brand
\$12.95 to \$26.95

Foster's Men's Wear 34tf

REAL ESTATE

SYLVAN TOWNSHIP—Well lo-
cated 64 acres excellent, level
land.

5-ACRE BUILDING LOT.
10-ACRE PARCEL, Grass Lake
schools, \$600 per acre.

R. D. Miller
Real Estate Broker
475-7811

15775 Cavanaugh Lake Rd.
Chelsea, Mich. 6tf

NEW CAR YEAR-END SALE

"BUICKS"

1971 Electra 225 4-dr. hardtop.
Sticker price, \$5781.80. Sale
price \$4833.62

1971 Electra 225 2-dr. hardtop.
Sticker price, \$5779.36. Sale
price \$4831.64

1971 LeSabre 4-dr. sedan custom.
Sticker price, \$4873.00. Sale
price \$4123.88

1971 Skylark 4-dr. sedan. Sticker
price, \$4275.58. Sale price
\$3786.37

"OLDSMOBILES"

1971 98 Luxury 2-dr. hardtop.
Sticker price, \$6199.17. Sale
price \$5163.91

1971 98 4-dr. hardtop (demo).
Sticker price, \$5956.69. Sale
price \$4974.05

1971 Cutlass Supreme convertible.
(No air). Sticker price,
\$4251.18. Sale price, \$3729.11

1971 Cutlass 2-dr. hardtop (no air).
Sticker price, \$3719.78. Sale
price \$3294.84

1971 Olds Delta 88 town sedan.
Sticker price, \$4823.07. Sale
price \$4086.44

Most of these cars have vinyl tops,
power steering, and power brakes.

SPRAGUE Buick-Olds-Opel, Inc.

1500 S. Main St., Chelsea
Phone 475-8664 x7

FOR SALE—Bicycle built for
two, Schwinn 2-speed tandem, in
like-new condition. Call Dave
Strieter, 475-4711. 7

WANT ADS

MEL HARTMAN, residential build-
er. Free estimates: houses, gar-
ages, kitchens. Flat work and roofs.
Call 878-6514. 13tf

WORK SHOE HEADQUARTERS

Famous Red Wing Brand
\$12.95 to \$26.95

Foster's Men's Wear 34tf

G. G. HOPPER

Building Contractors
Phone GR 5-5581
Gregory 498-2143 40tf

A fine selection of New and Used Cars

for immediate delivery

Harper Pontiac Sales & Service

475-5311
Evenings, 761-2999 1tf

PIANO LESSONS

in your home
by experienced teacher
with Master of Music degree.

Beginners to advanced.
Call 662-5850 8

REAL ESTATE

WATER-FRONT home at Island
Lake. Year around.

3-BEDROOM home at Portage
Lake on 2 lots, Dexter schools.

22 VACANT ACRES—High, roll-
ing hill, good building site, on
Dexter Trail.

WHY RENT? You can own 3/4
acre zoned for mobile home.

Howell
Town & Country, Inc.
Ph. Howell 878-3177

Your Local Representative
CARLIE WIEDMAN
Phone 426-3768 x8

WANT ADS

EXPERIENCED CHILD CARE in
my home, any time. Ph. 426-4192.
x41tf

PIANO TUNING at savings! New
man in area offering introductory
rates to build clientele. 769-0130.
30tf

Custom Kitchen Cabinets

and
Formica Tops

Made to Order
475-2857 32tf

FURNISHED APARTMENT for
rent, 1 bedroom, Dexter area.
Available mid-July. Ph. 426-3961.
x3tf

COUNTRY LIVING

5 ACRES modern 5-bedroom Cape
Cod. Quality construction, plas-
ter walls, central air conditioning,
2 1/2-car garage, automatic garage
opener, dining room, family room,
fireplace, small horse barn. Priced
to sell.

10 ACRES—Original South-
ern Colonial farm home. 3
fireplaces, 4 bedrooms, 2 1/2-bath,
large country kitchen with fireplace
and bar-b-q, large barn, riding corral,
30 minutes from Ann Arbor. This
home has been completely recondi-
tioned. Priced to sell at \$62,000.

13.8 ACRES—Large Early Amer-
ican farm home, 5 bedrooms,
fireplace, new barn, picturesque
view of West Lake.

20 ACRES—New 3-bedroom
home. Wooded setting, 30 min-
utes from Ann Arbor. Priced to
sell at \$45,000.

1 ACRE—3-bedroom, family room
attached garage, blacktop road.
Priced to sell at \$33,900.

LAKE LIVING

4-BEDROOM on the water at Sugar
Loaf Lake. Family room,
pool table room. Second kitchen
on lower level. Excellent condi-
tion, 2 1/2-car garage. Excellent
beach.

LAKE-FRONT, 2 1/2-car garage, 4
bedrooms, study, utility room,
beautiful beach, located on Sugar
Loaf Lake.

CAVANAUGH LAKE-FRONT
home, 2-bedroom year-round.
Full basement, priced to sell at
\$21,900.

MODERN 3-BEDROOM ranch
home, dining area, utility room,
2 full baths, 2 1/2-car attached heat-
ed garage. Access to Joslin Lake.

Chelsea-Manchester Area

4-BEDROOM—2 full baths, close
to elementary school, fenced-in
yard, pear trees, apple trees and
peach trees. Priced to sell at
\$27,000.

3-BEDROOM—California Ranch
with Michigan indoor swimming
pool, for year-round use, 2 fire-
places, 2 1/2 baths. Excellent lo-
cation in Chelsea.

LARGE 3-BEDROOM 2-story
home in Manchester, finished
recreation room, dining room,
large living room. This home is
in excellent condition and priced
to sell at \$32,000.

3-BEDROOM HOME in Manches-
ter. Large lot, 99 feet by 140
feet, dining room, nicely landscap-
ed, newly decorated, new furnace.
Priced to sell at \$23,500.

Frisinger Realty Co.

Chelsea 475-8681
George Frisinger, 475-2903
Paul Frisinger, 475-2621
Herman Koenn, 475-2613
Hope Bushnell, 475-7180

Serving
Ann Arbor
Chelsea
Dexter
Manchester

Member of Multiple Listing Service x7tf

FOOTWEAR

Another
Big Reduction

Bargain Floor

DANCER'S 7

FREE—1 square dance lesson.
Sept. 19, Stockbridge Town Hall
7:30-9:30 p.m. Following lessons
\$1.50 per couple. Sponsored by
Stockbridge squares. 13

WANT ADS

XEROX COPIES made. Merkel
Brothers. 41tf

PATCHING and PLASTERING.
Call 475-7489. 38tf

FOR REAL DOLLAR SAVINGS
be sure and see us before you
buy any new or used car. Palmer
Motor Sales, Inc. Your Ford Deal-
er for over 50 years. 2tf

HOUSEWIVES—Sell wearing ap-
parel, part-time, set your own
hours. High commission. Receive
a complete Bee-Line fashion ward-
robe twice yearly. No investment.
Call (313) 423-4651 or (313) 423-
8945. x7

Real Estate For Sale

BRAND NEW—3-bedroom brick,
picture window overlooks golf
course, 2 ceramic baths, 2 fire-
places, large (unfinished) rec room,
2-car attached garage, \$48,500. Fi-
nancing available.

7 1/2 ACRES—All inside village
limits. Has 3-bedroom house,
garage, 745 feet of railroad front-
age, \$30,000. Terms.

BUILDING LOT—One mile east
on Old US-12, 135 feet of front-
age, 1 1/4 acres. \$4500. Terms.

10 ACRE LOT—Several to choose
from, 2 1/2 miles out. From \$7,500
up.

FOR SALE—GE electric dryer in
good condition. Norge washer,
needs repair. Both for \$50. Call
426-8893. -31

FROM wall to wall, no soil at
all, on carpets cleaned with
Blue Lustre. Rent electric sham-
poor \$1. Dancer's. 7

CLARENCE WOOD

BROKER

Efficient PERSONAL Service
646 Flanders St.
Phone 475-2033 or 475-8217 5tf

FOR SALE—GE electric dryer in
good condition. Norge washer,
needs repair. Both for \$50. Call
426-8893. -31

FROM wall to wall, no soil at
all, on carpets cleaned with
Blue Lustre. Rent electric sham-
poor \$1. Dancer's. 7

USED CARS

1970 LeSabre 2-dr. hardtop (air
cond.) \$3095

1970 Olds 442 2-dr. hardtop, vinyl
top (real sharp) \$2895

1970 Ford LTD 2-dr. hardtop \$2695

1969 Chev Nova 2-dr. 6-cyl., auto.
trans. \$1695

1968 Olds Lux Sedan (air cond.)
\$2395

1968 Olds 98 sedan \$1895

1967 Buick LeSabre 4-dr. hardtop.
\$1495

1967 Mustang, vinyl top \$1295

1967 Cutlass 4-dr. sedan \$1295

1966 Buick Riviera 2

WANT ADS

SEE US for transit mixed concrete. Klump Bros. Gravel Co. Phone Chelsea 475-3530, 4920 Loveland Rd., Grass Lake, Mich. x40tf

TRAVEL TRAILERS — 18-ft. and up; 10x55 ft. trailers. John R. Jones Trailer Sales, Gregory, Mich. Phone 498-2656. x43tf

HOUSE FOR SALE

Living quarters upstairs—kitchen, 3 large rooms, bath, hall closet, walk-in attic off kitchen, refrigerator, stove. Private entrance. Ground floor—6 rooms, bath, large glassed-in front porch, refrigerator, stove, carpeting, basement, 3-car garage, garden space, large back yard. 1 1/2 lots. Can rent both upstairs and down. Shown by appointment only. Location, 146 Park St. Call 475-8502 or 475-2039. x49tf

STANLEY'S TREE SERVICE

Trimming, removals, cabling, bracing, surgery, etc.

FREE ESTIMATES

Phone 428-8967
If no answer, ph. 428-8966 x43tf

Exceptional Home for exceptional people

NEW LISTING near Chelsea on M-52. Almost new two-level home, 2,080 square feet on 2 1/2 acres. Hillside, landscaped, wooded, central air conditioning, oil heat, garage with storage area, upper and lower wood decks, 26' by 12' carpeted living room with fireplace, large paneled rec. room with fireplace, two bedrooms, two baths, wood kitchen cabinets, built-in range and oven, electric dishwasher and garbage disposal. Shown by appointment only.

Mary Wolter Real Estate

7421 Dexter-Pinckney Rd. Call 475-7660 or 426-8188 x7

FOR SALE—Gas stove, 2 years old. Like new. \$100. Call 475-7361. x8

WANT ADS

FOR SALE — Decca electric guitar, used one month. Also, size 9E football shoes, only used once. Phone 603-8228. x46tf

WANTED

TYPIST

Accurate, 55-60 wpm.
Apply in Person

Chelsea Standard
800 N. Main St. Ph. GR 5-3581

CAR RENTAL by the day, week-end, week or month. Full insurance coverage, low rates. Call Lyle Chriswell at Palmer Motor Sales GR 5-3271. x25tf

WANTED TO RENT—2-bedroom house or lower 2-bedroom flat. Call 971-3461 or 475-2709. x5tf

CAR & TRUCK LEASING. For details see Lyle Chriswell at Palmer Motor Sales, GR 5-3271. x49tf

REAL ESTATE

50 ACRES VACANT—M-36, Undeveloped. Twp. \$30,000.

RIVER FRONT LOTS — 2 large lots on Huron River near Buck Lake.

10-ACRE PARCELS—Near Doyle Rd., \$1,000 an acre will release building site.

TWO LOTS—Guaranteed building site near Patterson Lake. Both for \$1,500.

2-ACRE BUILDING SITE—Wooded, level, Portage Lake area. \$12,000.

Mary Wolter Real Estate

7421 Dexter-Pinckney Rd. Call 475-7660 or 426-8188 x7

LANEWOOD — 2-story, 3-bedroom family room, 1 1/2 baths, living room, dining room carpeted, hardwood floors in hall and bedrooms; air conditioned, refrigerator, built-in range, garbage disposal, humidifier, TV antenna with rotor, fire alarm system, 1 1/2-car attached garage; fenced back yard. Priced for quick sale, \$31,000. 32 Sycamore, Chelsea. Ph. 475-7550. x7

WANTED TO RENT — First floor apartment. Call 475-7483. x7

WANT ADS

GUITAR INSTRUCTION. Classical, folk, pop. Emphasis on theory. Only \$8.50 for 1/2 hour. Phone 475-1129. x47tf

PIANOS TUNED — Players and read organs rebuilt. D. Harvey, 1201 Shady Lane, Tecumseh. 423-8045 after 4 p.m. x44tf

MOTHERS! Here's a job you can handle. Have a debt-free Christmas plus earn \$1,000 or more from August to December. Adorable toys, 80 percent at \$3 and under. No gimmicks, collecting, or delivering. No cash investment. Free supplies. For information without obligation call collect: 426-2041, (517) 468-3477, or (517) 371-2948. x15

FOR SALE—2.3 acres with private drive off Old US-12 West. \$6,500. Phone 475-8904. x44tf

EXPERIENCED CHILD CARE in my home, any time, Phone 761-8701 after 6 p.m. x5tf

Mark Your Calendar SIDEWALK SALE on Friday & Saturday, Aug. 13 and 14

400 18"x27" throw rugs, all serged. Wide variety of colors. Many smaller and larger sizes.

CARPETING LEFT - OVERS — Ends of rolls. Many colors, shags, nylons, acrilans, rubber backs, at way down prices.

SEVERAL QUARTS and gallons of Dutch Boy flat wall enamel, satin gloss enamel and house paint at give-away prices. (Mixer's errors and discontinued colors.)

DISCONTINUED LINE of oil stain in 1/2 pta. and quarts at 1/4 off regular price.

LINOLEUM—Inlaid, embossed and Corlon. Ends of rolls, discontinued patterns. Small pieces for cupboard drawers, etc., at sharply cut prices.

MANY OTHER ITEMS too numerous to mention will be on sale—furniture, gift items, etc.

MERKEL BROS.

Open Mon. & Fri. Until 9 Ph. Chelsea 475-8621 x7

1970 CHEVROLET Impala 4-door hardtop for sale. Loaded, must sell. A-1 condition. Also 20-foot raft, 2 years old, has 40 hp motor, canopy, curtains, trailer. Call 479-6468. x8

WANT ADS

FOR SALE — 2 good quarter horses, used to children. 789-2590 after 6 p.m. x49tf

FOR SALE, my owner—4-bedroom home, kitchen, dining room, glassed-in porch, full basement, one-car garage. Close to the elementary school. Priced at \$23,000. Will consider land contract. Ph. 475-7365. x52tf

Bring This Adv.

for a FREE GAME at

North Lake Mini-Putt

Corner of N. Territorial and Stofer Rds.

Open 7 Days A Week

(Offer good through Aug. 12, 1971)

STEREO — GE portable, 4 yrs. old, good condition. Originally \$105, will sell for \$40. Call 475-7578. x7

NEW 55-GAL. OIL DRUMS for sale. \$2.50 each. See at Sprague Buick-Olds in Chelsea. x7

FOUND — One lost or strayed hound dog, male. Phone 475-2130. x7

FOR SALE — Power reel lawn mower, oil space heater, 1 a w n sweeper, 25-gal. oil tank. May be seen at 20154 Old US-12 West. x7

'65 FORD STATION WAGON in good condition for sale. Also Pekingese puppies for sale at 8932 M-52, Chelsea Manchester Rd. Call 428-3071. x8

CONVALESCENT CARE in Chelsea for two elderly ladies or gentlemen. Special food and care. Call 475-8935. x8

WE NEED 2 or more bedroom house or apartment, furnished or unfurnished, in Chelsea-Dexter area. References. Phone collect (517) 489-9196 after 4 p.m. x7

WANTED — Housekeeper for farm home. Age to 40. Call 479-6468. x8

WANT ADS

THE LITTLE FLOWER SHOP

8451 Waltrous Rd., Chelsea
Phone GR 5-8508

Flowers, corsages, arrangements and plants.

Weddings and funerals. x47tf

POODLE GROOMING in your home. \$10 miniature, \$15 standard. Mrs. Hull, Ph. 1-227-4271. x7

BABYSITTING in my home. 208 South St. Ph. 475-7822. x7

HELP WANTED—Please call in person. 119 S. Main. x4tf

LOT FOR SALE—1 1/2-acre lot, approximately 1 mile from village limits. Blacktop road. On city gas line. 135' feet frontage. \$4,500, terms possible. Phone 475-8217 or 475-2033. Clarence Wood, Broker. x7

FOR SALE — Twin tortoise shell kittens, 50c each or 2 for 75c. Katie Donkin, ph. 475-7261. x5tf

AKG St. Bernard puppies. Pick out your little "saint" now. Deposit will hold. Ph. 426-2111. x7

THORNTON 475-8857

CORNER LOT—Older 3-bedroom home on a large tree-lined lot, porch across front of house, fireplace, large oak trimmed living room, formal dining room, 2-car barn-type garage.

LARGE LOT—3-bedroom ranch, screened porch, large kitchen, tiled bath, 2 1/2-car garage. Immediate occupancy.

LAKE-FRONT—Beautiful 2-bedroom brick ranch home, 1 1/2 baths, fireplace and kitchen with many built-ins, porch and patio, all situated on a wooded peninsula AND a smaller 2-bedroom fully carpeted income or mother-in-law year around cottage goes with it. Call us for an appointment.

ECONOMY—Enjoy a new kitchen, large carpeted living room and 2 bedrooms overlooking the Huron River. Needs some fixing. \$16,900.

LAKE-FRONT—3 bedrooms, large living room with stone fireplace, 2 baths and a walk-out basement, \$25,000.

FARM — 80 rolling acres, 3-bedroom house, barn and outbuildings. Completely fenced.

BUILDING SITES

3 ACRES rolling, Chelsea.

1 1/2 ACRES wooded, Chelsea.

3 ACRES wooded, Chelsea.

3 ACRES with stream, Dexter.

MULTIPLE LISTING

John C. Pierson
ASSOCIATE

or

Robert H. Thornton Jr.
REALTOR

105 N. Main, Chelsea
475-8629 eve. 475-2064, 475-8857 x7

WANTED — Would like mature woman to live in with elderly gentleman. Light housekeeping and cooking. Phone 475-2818 or (517) 622-4473 for further details. x7

APARTMENT NEEDED suitable for single female teacher. Call 475-8079. x7

NORTH LAKE United Methodist Church Country Fair. Aug. 7. Lunch wagon, 11 a.m. to 5 p.m. Cafeteria dinner, 5 p.m. to 9 p.m. Games, bake sale, hand-made bazaar and Christmas items. x7

GARAGE SALE — Log and cow chains; grinding wheel with 1/2 hp motor; rototiller, many antiques of all kinds; used lumber and pipe, end and pipe wrenches, all kinds of tools, other articles too numerous to mention. Friday, Aug. 6, Saturday, Aug. 7, 8 a.m. to 6 p.m. 756 Taylor St. x7

BABY-SITTING in my home. Infant to 2 years preferred. Experienced with twins. Phone 475-2562 anytime. x8

FOR SALE — '62 Mercury. Body good, engine needs work. Make an offer. Call 475-2935. x8

FOR RENT — New first-floor apartment, fully furnished, on Waterloo Mill Pond. Garage space. No pets or children. Teachers preferred. References. Call 475-3604. x8

TWO SCHWINN BICYCLES — Boys 24-inch, \$20; boys 2-speed 26-inch, \$25. 1965 Honda S-90. Call 475-7273. x8

BY OWNER — four acres, 300-ft. frontage on Cavanaugh Lake, 3 bedrooms, 1 1/2 baths, year-round home. \$54,000. Call 475-2555. x7

ANTIQUERS! Sharon Mills Antique Show, Sunday, Aug. 8, 5701 Sharon Hollow Rd., Manchester. Outstanding dealers! "Home-made" vittles! No admission or parking fees. 10 til dusk (313) 428-8200. P.S. There is a former grist mill restored by Henry Ford with its own Water-Operated generator. x7

L.A. Flea Market opening Aug. 1, at 7661 Ann Arbor Rd., Jackson, Mi. 1-94 to Sargent Rd. exit, then 2 miles East on Ann Arbor Rd. Dealer space available at \$2.50 per day. (517) 764-2865. Ask for Liz. x8

AKG GERMAN SHEPHERD puppies. A fine litter. Phone (517) 596-2330. x8

GARAGE SALE — Household goods including fruit jars, dishes, older men and women's clothing, Aug. 9 to 6 p.m., 11296 Island Lake Rd., Dexter. x7

FOR SALE — Five 17.5 eight-ply tires on Chevy wheels, almost new. Phone 475-8852. x7

FOR SALE — 1954 Chevy 3/4-ton pickup with dump box. Phone 475-8852. x7

WANT ADS

PRINTING from John's Shop—for weddings, anniversaries or any occasion. Satisfaction guaranteed. Prompt service, reasonable prices. Phone 475-7600. x9

REDUCE EXCESS FLUIDS with Fluidex, \$1.69. Lose weight safely with Dex-A-Diet, 98c, at Chelsea Drug. x15

HOUSEWIVES! MOTHERS! the "in place" this year... House of Lloyd. No collecting. No delivering! Free supplies! Bonuses! Weekly pay! Free gifts! Call Margaret, 685-8998. x13

TRENCHING—Water, electrical lines, footings, etc., 4 to 14 inches wide, to 6 feet deep. Call Charles Slocum, 475-7611 evenings. x8tf

WANTED — New or used fiction and non-fiction books for use at St. Louis School for Exceptional Boys. Age group from 4 years to 10 years. Any book you donate will be appreciated. Call 475-8480 Evenings 475-5281 for pick-up. x8

WANTED — Mature, dependable woman to babysit in my home from 8 a.m. to 4 p.m., for one child during school year. Ph. 475-7359. x7

LOST — Siamese cross, gray with tiger points, female, 1 yr. in vicinity Island Lake and Wexner Rd. Please call 475-8696. Ask for Dr. Clark. x7

FOR SALE — 1965 Honda, S-90. Excellent condition. Call between 4 and 5:30 p.m. 475-2427. x7

FOR SALE — 1/2 ton briquet coal, \$10; must be carried out. Phone 475-2580 after 5 p.m., no calls Saturday or Friday evening. x6tf

NEWSBOY WANTED for the morning Detroit Free Press. Route would cover Lanewood Subdivision area. Minimum age 12. 475-7678. x6tf

ADORABLE KITTENS — Persian type and short haired. Free to good home. Call 475-2952 or see at 3663 Chelsea-Manchester Rd. 7

FOR SALE — Maltese pups. 20100 Old US-12, Chelsea. Phone 475-8784. x7

WE NEED oats and hay. Sharon Hills Ranch. 428-9452. x7tf

BIG GARAGE SALE — Hundreds of useful items. Tools and equipment for metal, plumbing, cement finishing, woodworking. Some lawn and garden equipment. Large collection of dishes, lamps, antique and hand-painted items. Hunting and other clothing. Saturday, Aug. 7 thru Wednesday, Aug. 11. 9494 Dexter-Chelsea Rd. Two miles west of Dexter. x7

GARAGE SALE — Aug. 7-13. All day week-ends, after 3:30 p.m. on weekdays. Some antiques. Miscellaneous household goods and appliances 2925 Baker Rd. Dexter. x7

GARAGE SALE — Boy's green boots, \$1.50; corner desk, \$6; hard back mysteries 50 cents each; hand mower \$2; teacart \$2; sturdy bunk bed and mattresses, good condition \$45; men's shoes 12 and 13. Much sewing material. Thursday and Friday afternoons, Aug. 5 and 6, 8594 W. Huron River Dr., Dexter. x7

FOR SALE — Eight foot outboard hydroplane with steering wheel controls. 426-3266. x7

REGISTERED Quarterhorse—Two year old mare. Half-broke for saddle. 426-2814. x7

FROLIC TRAVEL TRAILER — 1969. 21 ft. Self-contained. Sleeps 8. Tandem axle. Perfect condition. 801 Planders. 475-2092. x8

YARD SALE — 419 S Main, Chelsea, 9 a.m. to 5 p.m. Saturday, Aug. 7. x7

FOR SALE — Small refrigerator. 24-inch. \$20. 7518 Base Lake Dr. 426-8682. x7

WANTED TO RENT — 3 or 4 bedroom house in the Dexter, Chelsea, Ann Arbor area. Must be available before Sept. 1. Top dollar for right house. 769-3811 persistently. x7

ONLY ONE LEFT — AKG Boston Terrier, 3 months old, all shots, any reasonable offer accepted. 555 Chandler, Chelsea. x8

CARD OF THANKS

We wish to extend our heartfelt thanks and appreciation for the acts of kindness, messages of sympathy, beautiful floral offerings, and donations to the cancer fund received from our kind friends, neighbors and relatives. We especially thank the Eastern Stars, the Past Matrons Club, WSCS of the Methodist church, the American Legion Auxiliary, Woman's Relief Corps, and the Rev. Richard Clemans for his comforting words.

THANK YOU

I wish to thank all my family, neighbors, friends, Olive Chapter 108, OES, doctors and nurses at the Chelsea Community Hospital for their kindnesses.

Mrs. Hugh Gaddis.

THANK YOU

I wish to thank all my friends, neighbors and relatives for remembering me with visits, cards and telephone calls while in the hospital. They certainly helped to pass away those dull moments. Special thanks to the Rev. and Mrs. Kuether and Don Gibson for their visits and prayers. Am so thankful for everything.

Gertrude Kuhl.

THANK YOU

I wish to thank all my relatives, friends, and neighbors, and the Rev. and Mrs. Andrew Bloom for all the lovely flowers, gifts and cards that I received during my recent illness.

Mrs. Agnes Faust.

Chelsea Golfers - Win \$100 Cash! in the BOONDOCKS SCRAMBLE

Make your own foursome team and play together. Choose starting times, while they last, August 14 or 15. You and your partners may play preferred shots throughout. Higher handicappers can beat the best in this exciting 9-hole team event. First prize, \$100 cash. Other events, prizes. Enter now to be sure of a spot. \$4 corners prize fund, golf, beer, refreshments.

SPECIAL—Extra rounds only \$3. Except for Grand Prize, no limit on prizes.

BOONDOCKS GOLF COURSE

13202 Curtis Road, Grass Lake

Standard Ads Are a Good Shopping Guide!

TODAY'S THOUGHT

By LOUIS BURGHARDT

A mother and father, in modest circumstances, were receiving monthly checks from their married son in repayment for money advanced for his college education. There was no I.O.U. or contract. It was a family affair of honor. The son, his wife and their three children were in a plane crash. The son and the three children died instantly. The wife died six weeks later from injuries.

The son was heavily insured. When the husband and children died before the wife, she became sole beneficiary. NO provision was made in their will to reimburse the son's parents. The wife was physically and mentally unable to revise the will before her death. When she died, her parents who lived 1500 miles away, became the legal beneficiaries. The son's parents received nothing.

This true story was published in one of our funeral directors association meetings. We related it as a public service in the hope you make SURE your will is updated with clear instructions to handle ALL situations... BURGHARDT FUNERAL HOME, 214 East Middle St., Chelsea, Mich. Phone GR 5-4141.

SPECIALS

U. S. NO. 1 MICHIGAN

Potatoes 10 lbs. 50c

ECKRICH SLENDER SLICED

Lunch Meats . . . 3 pkgs. 89c

ARCHWAY

Cookies 3 pkgs. \$1.09

25-OZ. MOTT'S

Applesauce 2 for 65c

20-OZ. JAR WELCH'S

Grape Jelly 38c

KUSTERER'S

FOOD MARKET

DIAL 475-2721 WE DELIVER

BANK AUTO LOANS ARE BEST!



ANY TRIP YOU MAKE will be more pleasant, if the car you drive is financed the Bank Way—economically, conveniently and with local people.

CHELSEA STATE BANK

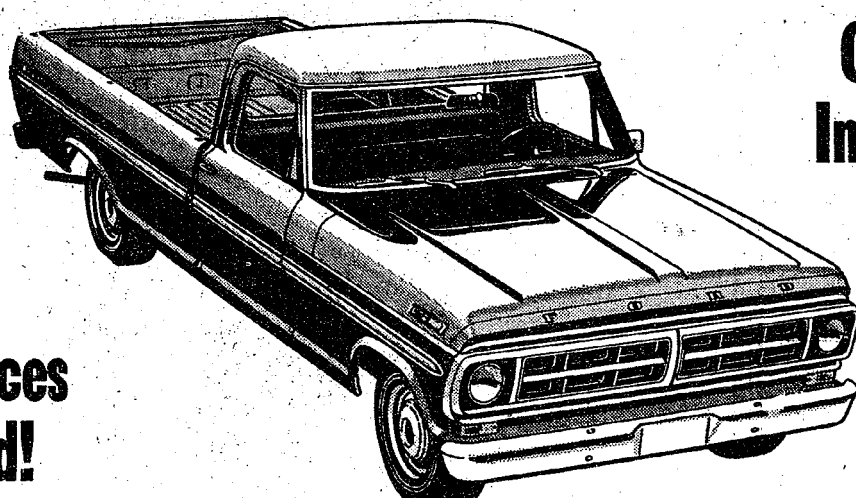
Member Federal Reserve System

Member Federal Deposit Insurance Corp.

Telephone Your Club News To GR 5-3581

8th ANNUAL

PICK-UP SALE



Over 30 In Stock!

All Prices Reduced!

ONLY \$2295⁰⁰

For a brand new 1971 Ford, 1/2 ton F-100 Pick-up with Fresh Air Heater, Back-up Lights, Side Mirror, Chrome Grille, Chrome Bumper, Spare Tire & fully Synchronized Transmission.

OUR SALES STAFF

Lyle Chriswell

John Popovich

Bob Rentschler

George Palmer

Community Calendar

CHS cheerleaders' car wash, Saturday, Aug. 14, 8 a.m. at the Pump & Pantry.

Stockbridge Squares will give an exhibition of square dancing at the Chelsea Community Fair the evening of Aug. 28.

North Sharon Bible church bible school Aug. 9-13 from 9 a.m. to 11:30 a.m. Open to all children. Contact Mrs. Gerald Proctor, 475-2012 or Mrs. William Enslin, 428-3594 if transportation is needed.

CHS cheerleaders' bake sale, Aug. 13, 10 a.m. on Main St. adv8

Fall bowling meeting of Chelsea Lanes Mixed League, at Chelsea Lanes, Friday, Aug. 20, at 8 p.m. xadv9

Chelsea Social Service, second floor of the Municipal Building, is open each Tuesday and Thursday, afternoon from 2 p.m. to 6 p.m. to assist persons with problems, either through counseling, or referral to other agencies, when indicated. Limited financial help may be given. The office also maintains a clothing depot for new and used clothing and bedding which is given without charge. All visitors welcome. Phone 475-4581.

Civil Defense officials remind: "Tornado watch" means that weather conditions indicate a tornado may develop, "Tornado warning" means that an actual tornado funnel has been sighted. Information is available at the Chelsea Municipal Building or by contacting Elwyn Beach, civil defense director, 479-6081.



Attention OCA members. Meeting Saturday morning, Aug. 7, 7 a.m. at regular meeting place.

Agricultural Entrepreneurs Farm Bureau pot-luck picnic Sunday, Aug. 15 at the home of Mr. and Mrs. Edwin Coy at 12:30 p.m. Drinks will be furnished and swimming will be provided.

Regular meeting of Herbert J. McKune Post No. 31 Thursday, Aug. 5, at 9 p.m. at the Legion Home, Cavanaugh Lake.

Regular business meeting of VFW Auxiliary Monday, Aug. 9, at 8 p.m. in the Rebekah Hall.

American Legion and Auxiliary hospital equipment available by contacting Loren Keezer at 475-2766 or 475-3431.

The fall meeting of the Rolling Pin League will be held Aug. 11, 9 a.m. at Chelsea Lanes.

North Chelsea United Methodist Church Country Fair, Aug. 7. Lunch wagon 11 a.m. to 5 p.m. Cafeteria dinner 5 p.m. to 9 p.m. Games, bake sale, hand-made bazaar and Christmas items. —adv7

TOPS Club at library, Wednesday afternoon group, 12:30 p.m. For information call 475-4549. Tuesday evening group, 8 p.m. For information call 475-8952.

Inquiries regarding the Chelsea blood bank may be directed to Harold Jones in the event that Mrs. Dudley Holmes is unavailable, or to Mrs. Pauline McKenna, American Red Cross in Ann Arbor, 971-5300.

DEATHS

Kellene S. Murphy

Dies Tuesday of Injuries In Train-Auto Crash

Kellene S. Murphy, 16, 513 Wellington St., died Aug. 3 of injuries sustained in a train-auto crash. Born Sept. 23, 1954 in Fort Knox, Ky., she was the daughter of David and Judy Sisson Murphy. Kellene was a junior at Chelsea High school, and was active in the Girls Athletic Association, the Pilgrim Fellowship group at the First Congregational church, and the youth bowling league.

She is survived by her parents; her maternal grandmother, Mrs. Helen Sisson, Tecumseh; her paternal grandparents, Mr. and Mrs. Wenton Murphy, Tecumseh; her paternal great-grandmother, Mrs. Nettie Murphy, Tecumseh; and two brothers, Michael and David, and one sister, Jacqueline, all at home.

Funeral services will be held Friday, Aug. 6, 2 p.m. at the First Congregational church in Chelsea with the Rev. Daniel A. Kellin officiating. Burial will follow in Oak Grove Cemetery.

Friends may call at the Staffan Funeral Home until noon Friday.

Matthew E. Blackwell

Funeral Will Be Saturday For 18-Month-Old Infant

Matthew Eric Blackwell, of 419 Wellington St., aged 18 months, died Wednesday as a result of injuries received in a train-auto crash Tuesday morning.

He was born March 6, 1970 in Ann Arbor, the son of Sherry Anna Blackwell.

Survivors, in addition to his mother, include his grandparents, Mr. and Mrs. Andy Blackwell of Chelsea, and great-grandparents, Mr. and Mrs. Clarence Cheatham, Jasper, Ala., and Marcus Blackwell, also of Jasper, Ala.; several aunts, uncles and cousins.

Funeral services will be Saturday, 10 a.m. at the Burghardt Funeral Home with the Rev. Clive Dickins officiating. Burial will follow in Vermont Cemetery.

BIRTHS

A daughter, Jean Marie, July 29 to Mr. and Mrs. Daniel J. Schnadt.

A daughter, Cynthia Ann, to Mr. and Mrs. Carl A. Gieske, Jr., July 31.

By the time he is 70, the average American will have used 36 million tons of water, 10,000 pounds of meat, 14 tons of milk and cream, and 9,000 pounds of wheat.

JC's Sponsoring Fishing Trip for Fatherless Boys

Chelsea Jaycees are sponsoring a day of fishing at Cavanaugh Lake for fatherless boys, Sept. 11 or 18.

Any fatherless boy between 8 and 17 is welcome to join in the fishing trip, which will begin at 10 a.m. at the lake. Prizes will be awarded for the largest fish and the most fish caught. Boys will also have a chance to talk about any problems they might have with one of the young leaders in the community.

Jaycees will evaluate the problems and questions raised by the boys, and get answers back to them as soon as possible.

Boys with fishing poles are asked to bring them. Jaycees ask that you make reservations before the event by writing P. O. Box 277 or phoning 475-8065 or 475-7912.

Area Students Attend Orientation at EMU

Three area students who expect to enroll as freshmen at Eastern Michigan University in September attended one-day orientation programs on the campus the week of July 19.

Alfreda Harrison, daughter of Mr. and Mrs. Harold Harrison, 1485 Chelsea-Manchester Rd., Thurlow Raymont, son of Mr. and Mrs. Thurlow Raymont, 8249 Alpine, Dexter, and James Weeks, son of Mr. and Mrs. James Weeks, 1017 Tamarac, Gregory, participated in the orientation program.

During their visit they received individual and small group counseling and registered for the fall semester. A campus tour, an opportunity to meet other freshmen in residence hall surroundings and 24 hours to become acquainted with campus routines were also part of the program.

Firemen Extinguish Two Minor Blazes

Chelsea Fire Department extinguished two minor fires during the last week.

On July 29, they were called to extinguish a burning gas can on I-94. The driver of a truck owned by Vermewien Trucking Co. of Oshkosh, had apparently tried to start the truck by pouring gasoline into the carburetor.

The gasoline ignited in both the truck and the can, but the engine fire had been put out before the Chelsea firemen arrived. The truck was not damaged.

On Friday, July 30, the firemen extinguished a small grass fire on Garvey Rd., just west of Pierce Rd.

Birthday Calendars Ready for Distribution

Chelsea Community birthday calendars sold by the Band Boosters are here.

Anyone who ordered a calendar and has not yet received it should contact Mrs. Willis Heydlauff at 479-7191 or Mrs. Charles Hafner at 475-2239.

Mrs. Carol (Nellie) Pierce of Langsville, O., is visiting her parents, Mr. and Mrs. Frank Abdon, 447 Railroad St.

School Board Briefs

(Continued from page one)

Haselschwardt, to designate Donald Irwin as the Chelsea School District representative on the Washtenaw County School Officers' Association Board of Directors. All ayes.

Motion by Straub, supported by Haselschwardt, that the president appoint delegates and alternates to the Michigan Association of School Boards annual conference to be held in Detroit, Sept. 17. All ayes.

Superintendent Cameron presented and discussed a list of recommendations for 1971-72.

Motion by Straub, supported by Haselschwardt, to authorize the business manager to proceed with implementation of the use of data processing for the general fund accounting, and to pay bills in the best interest of school district to take advantage of available discounts, and to have all procedures approved by the school Certified Public Accountant firm. All ayes.

A discussion was held regarding secretarial salaries for 1971-72, and was referred to the Labor Relations Committee for study and recommendation.

Business Manager Mills presented a tentative operating budget for 1971-72. No action was taken by the board.

Motion by Straub, supported by Smith, to hold a special board meeting on Aug. 23, at 6 p.m. All ayes.

Meeting adjourned at 12:15 a.m.

Railroad Crossings Will Be Repaired

Penn Central railroad crews will begin repairing the McKinley St. railroad crossing Monday, Aug. 9, according to Robert Devine, freight agent for the company.

The McKinley crossing will probably be closed the entire week.

Devine said that it would still be three to four weeks before the crews started work on the Main St. crossing. That crossing will be closed for two to three weeks while repairs are made, Devine added.

All-A Record at U-M

Joanne Fisher, daughter of Mr. and Mrs. Joseph V. Fisher 415 Washington, made an all-A record at the University of Michigan during the spring term. Joanne is a senior English major in the School of Education.

Dog Bites Reported . . .

(Continued from page one)

Fults, Ordway and another family. Both Fults and Dolin were treated at Chelsea Medical Center.

The two owners of the dogs were issued summonses to appear in District Court on Aug. 23.

Arson Suspected in Area Fires

(Continued from page one)

Breuninger had checked the barns only five minutes before the fire erupted.

Two Dexter area youths were arrested and charged with one count of arson following two fires on the night of June 13. That night, a barn on Riker Rd., and a barn on McGuinness and Fleming Rds. were destroyed.

Leland Dwaine Mannor, 7562 Jackson Rd., pled guilty in Ann Arbor Circuit court on July 16 to burning real property. He will be sentenced Sept. 13 in that court, and faces up to 10 years in jail.

A juvenile charged as a result of the same two fires will have a hearing in Ann Arbor Juvenile Court Aug. 18. Since he reached the age of 17 shortly after his arrest, it is possible that the prosecutor's office will request that he be allowed to stand trial as an adult at that time.

Both Mannor and the juvenile have been released on bond.

The Dexter Fire Department has offered a \$1,000 reward for information leading to the arrest and conviction of those persons responsible for the rash of fires caused by arson in the Dexter area.

The Dexter area fires in order of their occurrence are:

Jan. 6—Hans Skjaerlund barn, 4380 Strawberry Lake Rd.

April 26—Detroit Edison owned barn, 11000 Trinkle Rd.

May 12—Jerry Gordenier barn, 7120 Mast Rd.

May 15—Detroit Edison owned house, 11000 Trinkle Rd.

May 30—Jerry Gordenier tool shed, 7120 Mast Rd.

June 9—Edison owned three-stall garage, 11000 Trinkle Rd.

June 13—John Quigley barn, North Territorial Rd.

June 14—D. E. Hoesy & Sons lumber sheds, Broad St., Dexter.

June 16—Barn at 10000 McGuinness Rd.

June 16—American Legion owned barn, Riker Rd.

June 17—Wiley Brothers four barns, Marshall and Parker Rds.

Mrs. Floyd Gentner, 316 Jackson St., returned home Sunday after spending a week in Hanover Park, Ill., as a guest of her son, Duane, and his family.



Now Available at

The Chelsea Standard

Mothers Look! Your Child's Portrait In Living Color

- ★ Child Must Be Accompanied By Parents
- ★ Additional Portraits in Color at Black & White Prices
- ★ No Age Limit
- ★ One Complimentary Color Portrait Will Be Given to Each Family as a Gift from Our Store
- ★ Groups at 50c extra per child.

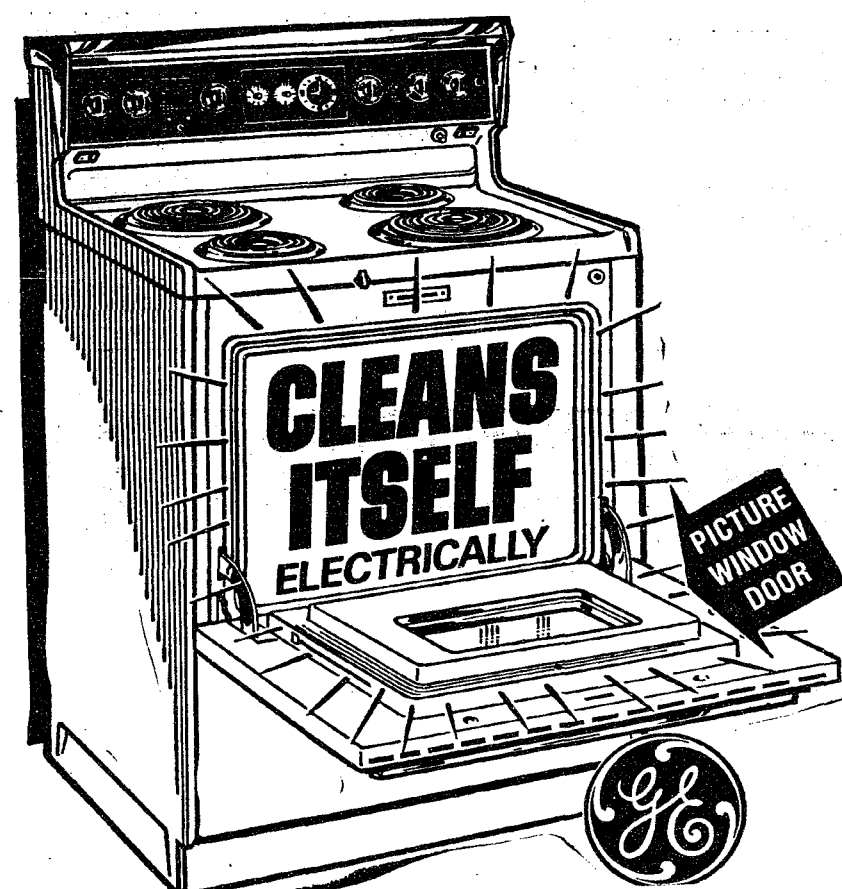
WE HAVE ARRANGED TO HAVE A NATIONALLY KNOWN CHILD PHOTOGRAPHER AT OUR STORE

FREE!

5 x 7 Plus 50c handling



RICK'S MARKET
20940 M-52, Chelsea, Mich.
TUESDAY, AUG. 10
10 a.m. to 5 p.m.



J370

Features Upswept Cooktop Plus P-7® Oven for Total Cleanability . . . Sensi-Temp® Surface Unit for "No Guesswork" Cooking.

- P-7 Automatic Self-Cleaning Oven System
- Cleans Entire Oven Including Shelves
- Cleans Inner Door and Window
- Cleans Surface Unit Reflector Pans
- 3-in-1 Automatic Sensi-Temp® Surface Unit
- Floodlighted Oven with Exterior Light Switch
- Picture Window Oven Door
- Full Length Fluorescent Cooktop Light
- Backsplash Attractively Styled in Gleaming Stainless Steel, Glass and Diecast Chrome
- Rotary Infinite-Control Dials Select Precise Heat on Surface Units
- Automatic Oven Timer, Clock and Minute Timer
- Two Convenience Outlets, One Timed
- No-Drip Cooktop Edge Catches Spillovers
- Tilt-Lock Surface Units with Removable Trim Rings
- Porcelain Enamel Broiler Pan and Chrome Rack
- Removable Storage Drawer
- Solid State Oven Temperature Control

GE RANGES PRICED AS LOW AS . . . \$198⁵⁰

HEYDLAUFF'S

(Formerly Frigid Products)

113 North Main St.

Phone GR 9-6651

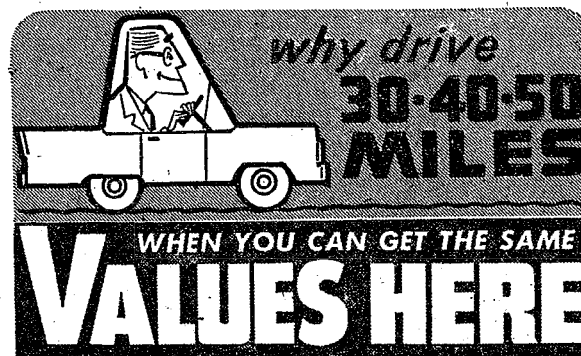
SUMMER SALE

SUITS — SPORT COATS

Up to 1/2 Off

STRIETER'S MEN'S WEAR

"The Place To Go for Brands You Know"



12" x 12" CARPET TILE — SELF-STICK

★ **INDOOR-OUTDOOR**
100% Acrylic Fibre
Foam-Backed
5 Colors - Mix or Match

39^C

Reg. 44¢
Save 5¢

★ **SHAG**
Long Loop Pile
100% Nylon

59^C

Reg. 65¢
Save 6¢

QUALITY SEAMLESS FLOORING ★ NEVER NEEDS WAXING **\$13⁹⁵** 25 Sq. Ft.

★ HIGH GLOSS **\$26⁹⁵** 50 Sq. Ft.

★ NON SKID **\$52⁹⁵** 100 Sq. Ft.

★ EZY TO APPLY

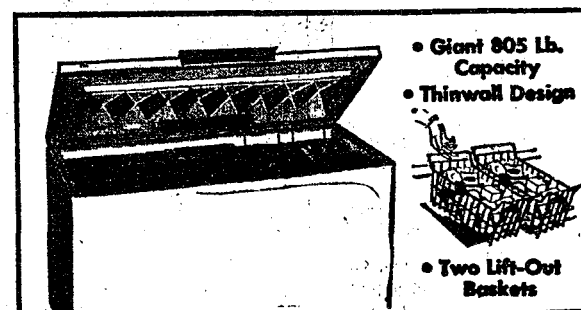
Mira floor
the Miracle Floor

Roll on the primer, sprinkle in color, roll on glass.

TRY IT IN KITCHEN, BATH, REC. ROOM, ENTRY

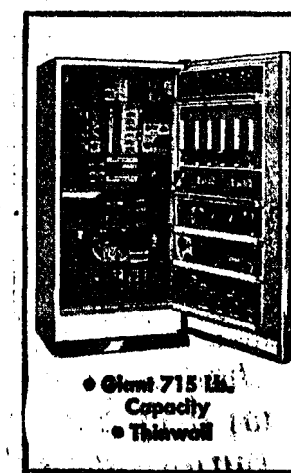
CHELSEA LUMBER

GAMBLES FREEZER SALE!



Coronado 23 Cu. Ft. Chest Freezer

Get the most value per cubic foot! Giant 805 lb. capacity freezer boasts 2 lift-out baskets holding 33 lbs. each! 5-year warranty on refrigeration system. **\$249⁹⁵** Use Your Credit



Coronado 20.4 Cu. Ft. UPRIGHT FREEZER

Use Your Credit **\$269⁹⁵**

Our finest upright holds 715 lbs. in a foam insulated 32" cabinet. 15 shelves. A fast-freeze 5-year warranty on refrigeration system. 44-774

Always Better Buys at GAMBLES

THE SUPERMARKET THAT'S JUST A LITTLE BIT BETTER

Stop & Shop

14901 Old U.S.-12
Corner at M-52
Chelsea

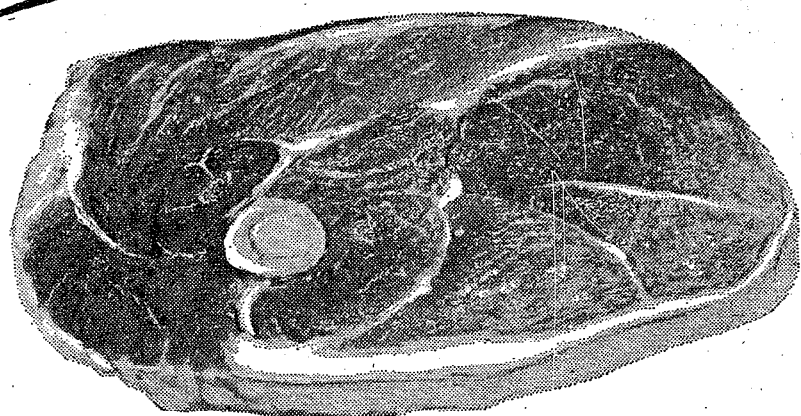


THE KNOW HOW OF INTELLIGENT MEAT BUYING IS REALLY 'KNOW WHERE'

Our customers have learned to depend on the outstanding quality of Stop & Shop meats — unfailing satisfaction with every cut they purchase. The finest quality, together with the experienced expertise of our meat cutting experts, makes an unbeatable combination!

Prices Effective Thursday, August 5, 1971,
through Sunday, August 8, 1971.

Cut from Young Corn-Fed Porkers!
U.S. Gov't Inspected Top Quality "Trimmed-Rite" Fresh



PORK STEAKS 49^c lb.

Tender - Lean - Practically Boneless

U.S.D.A. Grade 'A' Fresh Frying
Chicken Breasts ... Backs Attached **49^c lb.**

U.S.D.A. Grade 'A' Fresh Frying
Chicken Legs ... Backs Attached **49^c lb.**

U.S.D.A. Grade 'A' Fresh Rock
Cornish Hens ... **59^c lb.**

Hickory Smoked! Sugar Cured!
Slab Bacon ... Whole or End Cut **39^c lb.**

U.S.D.A. GRADE 'A' FRESH
WHOLE FRYERS
33^c lb.

PLUMP! HYGRADE'S BALL PARK
FRANKS
1-Lb. Pkg. **89^c**

Top Quality! 'Trimmed Rite' Fresh, Lean
Pork Roasts ... Boston Butt **49^c lb.**

Top Quality! 'Trimmed Rite' Fresh, Boneless
Pork Roasts ... Boned! Rolled! Tied **59^c lb.**

Top Quality! 'Trimmed Rite' Fresh, Boneless
Pork Cutlets ... Lean! Meaty! **69^c lb.**

Delicious! Peschke's
Boiled Ham ... 12-Oz. Pkg. **99^c**

PAW PAW CIDER OR WHITE
VINEGAR
1-Gal. Jug **59^c**

TAST-D-LITE
TOMATO JUICE
1-Qt., 14-Oz. Can **22^c**

SHAMROCK GRADE 'A'
EGGS ... Medium Size Dozen **39^c**

CARNIVAL
ICE CREAM
1/2 gal. 59^c

Courteous, Friendly Service

For Your Shopping Convenience ...

OUR NEW SUMMER HOURS
Monday thru Saturday
9 a.m. to 9 p.m.
Sunday, 10 a.m. to 5 p.m.
Plenty of FREE PARKING

MEADOWDALE FRESH FROZEN
LEMONADE
6-Oz. Cans **9^c**

CARNIVAL
ICE CREAM BARS
12 pak 59^c

ICE COLD BEER & WINE

Farm Fresh Produce

Red, Ripe
WATERMELON ... 20-Lb. Avg. **98^c**
Michigan
PASCAL CELERY ... Stalk **29^c**
California
SWEET PLUMS ... Lb. **29^c**

FRESH-A-BYE
DISPOSABLE DIAPERS
30-Count Box **99^c**

FAMILY SCOTT
BATHROOM TISSUE
4-Roll Pkg. **29^c**

McDONALD'S
FRUIT DRINKS
3 1/2 Gal. \$1⁰⁰

VERNOR'S GINGER ALE
10-Oz. No-Return Bottles **8 pac 99^c**

Shop in a pleasantly cool AIR-CONDITIONED STORE



WE RESERVE THE RIGHT TO LIMIT QUANTITIES

For Your Convenience OPEN SUNDAY 10 a.m. - 5 p.m. All Sale Prices Effective Sundays

Sorry, No Sales To Declen

STORE HOURS:
MONDAY thru SATURDAY 9 a.m. to 9 p.m.
SUNDAY 10 a.m to 5 p.m.

CROSS 4. Frau's (German)
20. Irish

21. Girl's name
 24. Part of Q.E.D.
 25. Price paid
 26. Beloved
 28. Archer
 30. Ragout
 32. Eyed amorously
 33. Network
 34. Spirit lamp
 35. " — Old Feeling"

38. Piece out
 39. Sandy's headgear
 40. Wagnerian lady
 41. Managed
 42. Cunning

Great Lakes, Ill.—Navy Seaman Apprentice David R. Gehringer, son of Mr. and Mrs. P. Gehringer of 11455 Pinckney-Dexter Rd., Pinckney, Mich., was graduated from recruit training at Naval Training Center, Great Lakes, Ill.

Telephone Your Club News
To GR 5-3581



**Beef 'em up
with tested
FEEDS**

More profits per pound of gain! Get your steers ready for early market, with tested, fortified Cattle Feeds to beef 'em up . . . fast.



S' CO

**LIQUE
TION**

personal property of antiques
tion, located 1 mile east of
use number 13759.

AUG. 7 11 A.M.

**ROTHERS
ONEERS**

Phone
Stockbridge
517-851-8042

**VE DISHES -
FURNITURE**

Furniture, Etc.

Antique secretary with glass
top; Two oak commodes; Curved
glass front china cabinet with
claw feet, nice condition; Two
library tables; Oak dresser and
mirror; Mahogany writing desk;
Mahogany drop-leaf table; China
cabinet, curved glass front; Can-
bottom rocker; Solid oak book-
case; Three walnut tables; Wal-
nut drop-leaf table with spoons
legs; Three oak straight chairs;
Three commodes; Cloverdale
table; Antique oak rocking
chair, real nice; Blond coffee
table; Two blond end tables;
Cane bottom chair; Small drum
table; Zenith color TV as is;
Three-shelf bookcase; Wicker
plant stand; Walking plow; Corro-
sheller.

antiques there are some real

Be sure to attend.
Lunch on Grounds.
nts on grounds day of sale

MOSKINS

NER

THE VILLAGE OF GHELSEA, MICHIGAN

RICHARD HARVEY, CLERK

OWNER

THE VILLAGE OF GHELSEA, MICHIGAN

RICHARD HARVEY, CLERK

OWNER



From D. G. Whitfield, 1951 Harris Rd., Charlotte, N. C.: Where are the sounds we used to hear? Nostalgic sounds of yesteryear, the clomp, clomp, clomp of horses' feet, the ice man coming down the street. The clang, clang, clang of trolley car, motorman armed with iron bar, to shift tracks over and get set, to pass another when they met. Train whistles wailing in the night, startled partridges taking flight. The rooster's crow at break of day, cows contentedly munching hay. Crackling logs in the fire place, baying coon dogs as they gave chase. The doleful call of whip-poor-will when twilight fell and all was still. The wooden churn with up-down dash, the smoothness of the gentle splash. The crunching foot-steps in the snow in dead of night with moon a-glow. There's something lost these days and time, the kitchen clock with muted chime.

The years go by so fast and yet there are things we never forget. After supper on Saturday night, taking baths was a weekly rite; tub was made of zinc and copper, had no tap or rubber stopper. Filled with water brought from the spring, heated 'til the kettle would sing. With soap and washrag on display, my mother always had her say; her voice still comes down the years, "Be sure to wash behind your ears."

FARM COOQS RATE HIGH

In a recent survey, most men (98 percent) gave their wives high marks on cooking, but ten percent claimed they could cook better than their wives. 85 percent of the men admitted they read articles on cooking. Two-thirds said they could like to know more about this culinary art.

Barley, Soybeans May Be Substitutes in Wheat Program

Major provisions of the 1972 program for wheat were announced July 16 by Secretary of Agriculture Clifford M. Hardin. The program provides for an acreage set-aside requirement equal to 83 percent of the farm domestic allotment—the maximum provided by law.

It was further announced that the program will again allow the substitution of feed grain for wheat; that soybeans will be a substitute crop next year; and that barley will be included in the 1972 feed grain program. No limit on wheat acreage will be established for 1972.

"These changes in the 1972 programs," Secretary Hardin said, "give the farmer greater freedom to plant the commodities which will earn him the best possible, without losing program benefits. By announcing these changes at this time, producers will have the information they need to make their planting plans for the 1972 crop."

There is no change in the previously announced 1972 domestic wheat allotment of 19.7 million acres or in the loan rate of \$1.25 per bushel national average established for the 1971 crop. Farm-stored and warehouse-stored loans and purchases are available to producers who participate in the program.

The 1972 wheat set-aside percentage is based on preliminary estimates of acreage required for next year's production to meet U. S. domestic and export needs, USDA officials said. It compares with the 1971 set-aside rate of 75 percent of the farm's allotment. Under the substitution provision acreage devoted to feed grain or

soybeans will be considered planted to wheat to prevent loss of allotment. Acreage devoted to wheat or soybeans will be considered planted to feed grain to prevent loss of the feed grain base. This will enable a producer to plant all or any combination of his acreage to wheat, feed grain or soybeans without loss of planting history or program benefits.

As in this year's program, there is no provision regarding excess wheat production in the 1972 program. However, excess wheat stored under prior programs may be released to the extent production is less than three times the domestic allotment multiplied by the farm yield.

As was the case this year, producers will receive preliminary payments after July 1 equal to 75 percent of the estimated face value of the wheat certificate. Any remainder will be paid after December 1, 1972.

The inclusion of barley in the 1972 feed grain program is the result of USDA estimates that a feed grain supplies will be adequate in 1972 due to the improved supply of blight-resistant corn seed. The set-aside requirement for barley will be between 20 and 35 percent of the base. The exact set-aside percentage will be indicated when the 1972 feed grain program provisions are announced.

Soybeans have been included as a substituted crop in 1972 in view of the supply outlook. This will also give the producer additional planting options. Wheat producers in 1972 will receive 100 percent of parity on the production of their full domestic allotment, the same as this year. Face value of the certificates will be the difference between 100 percent of parity on July 1, 1972 and the national average wheat price received by farmers from July through November, 1972.

Under the current program, the farmer may plant as much wheat or any other non-quota crop as he wishes after he has met his acreage set-aside and conserving base requirements. Or, he can choose not to plant any wheat. Crops subject to quota in 1972 will be peanuts, rice, tobacco, extra long staple cotton, and sugarcane.

Producers are not required to plant wheat to obtain certificates. However, failure to plant or to be considered to have planted at least 90 percent of a farm's 1972 domestic allotment of either wheat, corn, grain sorghum, barley or soybeans can result in a reduction in the 1973 allotment by as much as 20 percent. If no wheat or substitute is planted for three consecutive years, the entire allotment may be lost. All allotments removed from farms will be reallocated to other wheat farms.

Acreage which is not planted due to a drought, flood, or other natural disaster or a condition beyond the control of the producer will be considered planted to wheat. Also, any producer who makes a required acreage set-aside but elects to receive no payment will not lose his allotment. Processors of wheat for domestic food use will continue to pay 75 cents per bushel towards the domestic certificates value. Again in the 1972-73 marketing year, no export marketing certificates will be issued.

Established summer-fallow farms which devote at least 55 percent of their cropland to that use will not be required to set-aside any additional acreage in order to qualify for program benefits.

As in 1971, producers may graze set-aside acres except during the five principal months of the normal growing season, but set-aside acreage must be protected against erosion, weeds, insect damage and rodents. In 1972, sweet sorghum again may be planted on the set-aside acreage and grazed, except during the five months of the growing season.

Producers who wish to qualify for program benefits need to sign up to participate. Sign-up dates will be February 28 through April

THE LANSING REPORT

FROM
senator
GIL BURSLEY



With the all-important budgetary and revenue questions still unsettled, it seems almost certain that Legislative action for the balance of the 1971 regular session will be limited to appropriations and revenue measures, to potential Constitutional amendments on reducing property taxes and permitting a graduated income tax, and to a small number of key bills that have already been enacted by one house and reported from committee for floor action in the other.

Accordingly, it is possible for a legislator to look back over the session at this time and review the progress made, thus reporting to the citizens who employ him.

I am in the process of introducing additional measures—bills that respond to problems brought to my attention only recently. And I have high hopes that the substitute Senate Bill 804, which I introduced and refined, will be the state school aid act passed into law for 1971-72.

But otherwise, it seems very probable that the status of the legislation listed here will remain unchanged until the legislature convenes again this fall.

LEGISLATIVE STATUS REPORT

July 22, 1971

Introduced by

Senator Gilbert E. Bursley and

1) Signed into law.

Public Act 2: Allows the formation of bank holding companies by permitting corporate ownership of bank stock.

Public Act 7: Allows intermediate school districts to issue bonds for the construction of facilities for the trainable mentally handicapped.

2) Passed by the Senate and House.

SCB 68: Requests the State Board of Education to establish guidelines for teaching elementary and secondary students about the physical and social consequences of drug usage.

SCB 69: Requests the State Board of Education to establish guidelines for environmental education.

3) Passed by the Senate.

SB 3: Permits abortion under specified conditions.

SB 269: Allows minor widows and widowers to receive life insurance benefits up to \$10,000 rather than present \$2,000.

SB 364: Establishes compensation limits for intermediate school board members.

SB 441: Makes Michigan a member of the Education Commission of the States.

SB 442: Requires the operation of kindergarten through high school programs by all local school districts.

SB 508: Continues the provision that there be no ceiling on interest rates through December 31, 1973.

SB 665: Provides for the reorganization of intermediate school districts into 15 to 25 districts.

SB 137: Creates Michigan Research Institute replacing Willow Run Laboratories, separate from the University of Michigan.

4) Reported from Committee in the Senate.

SB 46: Establishes first Wednesday after Labor Day as opening day of school.

SB 207: Provides for pilot studies of regional school transportation.

SB 518: Allows Probate judges to hold court in places within

7, 1972. A producer may participate in the wheat program on any farm or all farms in which he has an interest, as he wishes.

ASCS county offices will notify wheat producers of their domestic allotments and the applicable set-aside for their farms.

county but outside county seat.

SB 804: 1971-72 State School Aid Act.

5) Introduced in the Senate.

SB 22 and 23: Provide for guidebooks and distress flags for the handicapped.

SB 68: Allows investment of public employees' retirement funds in the Asian Fund.

SB 70: Repeals the coyote bounty.

SB 91: Provides for certification of social workers.

SB 123: Exempts school textbooks from the sales tax.

SB 137: Provides for licensing horseshoers.

SB 146: Provides regulations for cooperative nursery schools.

SB 206: Allows transfer of funds from school districts to intermediate school districts for repayment of services.

SB 208: Provides for uniform application of educational evaluation systems.

SB 209: Allows banks to remain open either on Monday or on Friday when holidays fall on both days.

SB 267: Grants authority and establishes procedures whereby state chartered savings and loan associations can convert to capital stock corporations.

SB 268: Exempts historical com-

missions formed by ordinance prior to 1970 from the seven-member limitation.

SB 412: Provides for transportation of all children living more than 1 1/4 miles from the school they attend.

SB 515: Change license fee for pet shops from \$150 to \$25 per year.

SB 602: Major revision of business corporation code.

SB 659: State school aid appropriation.

SB 754: Required electric utilities to obtain certificates of public convenience and necessity for steam generating plants and certain electric transmission lines.

SB 764: Permits participation by licensees in any group plan for reduced rates for funerals.

SB 771: Requires county clerk to supply marriage license applicants a list of family planning and birth control clinics prepared by county health departments.

SB 873: Limits city income tax exemptions for children born after December 31, 1972 if there are two or more other living children; exempts multiple births, adopted and foster children.

SB 874: Limits state income tax exemptions for children born after Dec. 31, 1972 if there are two or more other living children; exempts multiple births, adopted and foster children.

SB 935: Allows state income tax credit for premiums on life insurance policies where an institution of higher education or the Michigan College Foundation is named as beneficiary.

SB 936: Provides grants-in-aid to watershed councils.

SB 966: Provides that homestead exemptions for the aged are automatic unless income increases above maximum allowable.

SB 997: Repeals intangibles tax if graduated income tax is passed.

Beekeepers May File for Payment Of Loss Caused By Pesticides Use

The indemnity payment program for beekeepers is retroactive to Jan. 1, 1967, and, under the Agricultural Act of 1970, will continue through Dec. 31, 1973. To be eligible for payments, beekeepers must file applications with their ASC County Committee and must prove loss of or damage to bee colonies because of pesticides.

A beekeeper filing for payment must satisfy the following requirements in written form: Show that his own pesticide application, if any, in no way contributed to his bee losses, that he took reasonable care to protect his bees and after exposure took reasonable action to reduce losses. If he had prior notice of pesticide use in the vicinity of his colonies, and that the loss of bees was due entirely to the use of pesticides.

If he has kept meticulous records that show precisely his income losses and when and where they occurred, he may want to file a claim on a "loss of income basis." On this basis he must show the exact amount of his losses, based on cost of replacement bees, loss of honey and beeswax sales, pollination fees, and queen and packaged bee sales.

Beekeepers who do not have detailed records that far back may file a claim on a flat basis but still must prove loss from pesticides through no fault of his own.

If a beekeeper files a claim on a flat rate basis the following schedule of payment will be used: \$20 for each bee colony destroyed, \$15 for each colony severely damaged, \$5 for each colony moderately damaged, \$7.50 for each queen nucleus destroyed, and \$5 for each queen nucleus severely damaged.

In either case, the beekeeper must specify colonies in his apiary before loss because of pesticides, colonies free of damage, destroyed, severely damaged, and moderately damaged, queen nuclei destroyed and severely damaged, and total loss.

The beekeeper will be expected to provide evidence of his bee losses from pesticides. Retroactively, such evidence may include official reports of losses filed with local or State authorities, business records kept at the time of loss, written statements by disinterested persons with personal knowledge of the losses, photographs authenticated as to date, location, and accuracy, reports of apiary inspectors and tax returns.

Current losses must include a written statement by a disinterested person and full information

regarding the loss, including cause, extent, date and location.

A beekeeper will also submit evidence that his loss occurred as a direct result of the use of pesticides near his apiary. Such evidence may include reports of chemical tests performed on dead bees, records, signed statements of official reports of pesticide applicators and vendors employed within forage range of the bees, and governmental agencies or universities possessing verified information on the application of pesticides in the vicinity.

Any beekeeper wanting to know full details about the indemnity payment program for pesticide losses should get in touch with his county ASCS office.

Thought For Food

When watching calories, be sure to include all the nutrients your body needs. Eliminating, or even skimping on, any of the four food groups is asking for trouble.

Busy teenagers will appreciate snacks that are nutritionally rewarding as well as tasty. Try grilled cheese on English muffins with tomato juice or an apple or pear with a glass of milk and a cookie.

Ice cream sandwiches make good outdoor desserts. Use brownie squares, large sugar or oatmeal cookies, waffles or toasted pound cake for the "bread" part.

Split English muffins, then toast. Top with cream cheese mixed with one-fourth cup each of finely chopped onion and green stuffed olives. Spread with deviled ham. Top each with slice of mato. Spread lightly with mayonnaise and broil for a few minutes or until heated through.

Two slices of fresh apple put together with a layer of cream cheese or slices of Cheddar cheese makes a hearty and substantial afternoon snack for active youngsters.

The Chelsea Standard, Thursday, August 5, 1971

SING-ALONG MUSIC at INVERNESS INN

NORTH LAKE

Saturday Nights - 9:30 p.m. to 1:30 a.m.

Music By

LES WARBOY and the Chippewa Cowboys

YOUR FAVORITE SANDWICHES

SHRIMP, CHICKEN & FISH DINNERS

BEER - WINE - LIQUOR

Need an apartment? Use a Standard Want Ad!

LOY'S TV CENTER

Authorized Sales and Service for
ADMIRAL - MOTOROLA - PHILCO

We Service Other Leading Brands
REPAIRS - SALES

COLOR WINEGARD ANTENNA
SALES & SERVICE

TWO LOCATIONS TO SERVE YOU

769-0198 or 769-4469

512 N. MAPLE AT DEXTER, ANN ARBOR

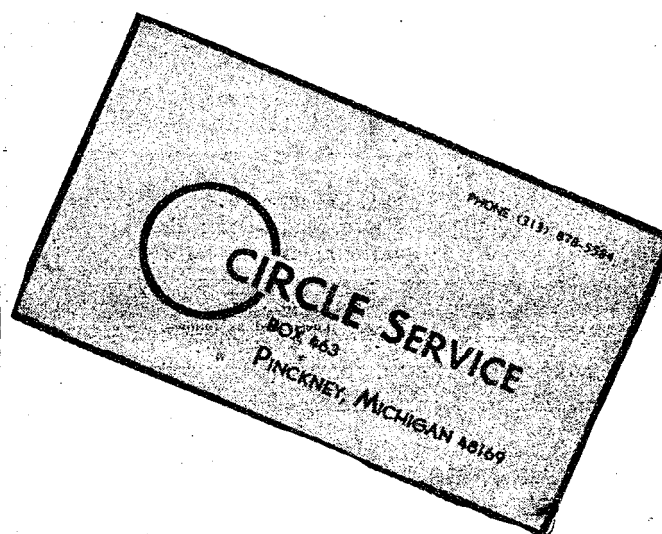
449-4454

10 JENNINGS RD. AT POST OFFICE, WHITMORE LAKE

Your Michigan Bankard or Master Charge Welcome Here.

RADIO DISPATCHED TRUCKS

We're Just Minutes from You!



Our objective is

to "help" people get things done.

If there is anything

you would like help doing,

Call us

and see if we can serve you.

8:00-11:00 a.m., Tuesday-Thursday

(313) 878-5584

POOL SALE

ALL SWIMMING POOLS
DRASTICALLY REDUCED

550 ROUND PACKAGES!

5' Wide Post

3' Wide Post

Leave Up All Year

15' Complete

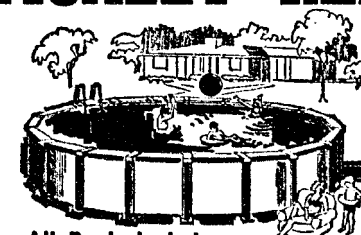
\$285

18' Complete

\$325

24' Complete

\$399



All Pools Include

3/4 H.P. Filter, Ladder, Vacuum,

Automatic Skimmer,

Test Kit

"Complete"

VISCOUNT POOLS

The Pool People

770 ROUND PACKAGES!

7' Wide Top

5' Wide Post

Leave Up All Year

18' Complete

\$375

24' Complete

\$449

27' Complete

\$525

LIVONIA
(near Wayne Rd.)
34750 PLYMOUTH RD

ANN ARBOR
(across from Westgate)
2480 W. STADIUM
Daily 10-7 Sat. 9-6 Sun. 11-6

YPSILANTI
(across from Chumley)
1123 E. MICH. AVE.
Daily 10-7 Sat. 9-6 Sun. 11-6

CANADA
Call 948-2053

2 FOR 1



Pay regular Low
rate on largest rug
we clean the
second one FREE!

RUG CLEANING

Act Now! Limited time only... SALE

Palace Quality
RUG CLEANING

FREE PICK-UP/DELIVERY
call 933-0700
or Ann Arbor 663-4185

Bonnie Wengren Wins Discus Throw In State AAU Meet

Bonnie Wengren, local track star, placed first in the discus throw in the State Women's AAU championship track meet Saturday, July 31 at Taylor.

Bonnie placed fourth in the javelin, and anchored the 880 relay team to a third-place finish.

Bonnie has begun training for cross-country competition in the fall, and runs 50 to 100 miles a week.

Her first cross-country meet will take place Aug. 28 in Lincoln Park.

Computer Program For Traffic Control

East Lansing — Dr. John B. Greer is writing a computer program that should eliminate the nuisance of being stopped by a red light at 2 a.m. when there's nobody else on the road.

The Michigan State University professor's program, which will be tested in Fort Wayne, Ind., after this year, will allow a computer to regulate traffic lights according to the density and speed of the traffic flow.



MAUSOLEUMS ★ MONUMENTS
BRONZE TABLETS ★ MARKERS

BECKER MEMORIALS

6033 Jackson Road
ANN ARBOR, MICHIGAN

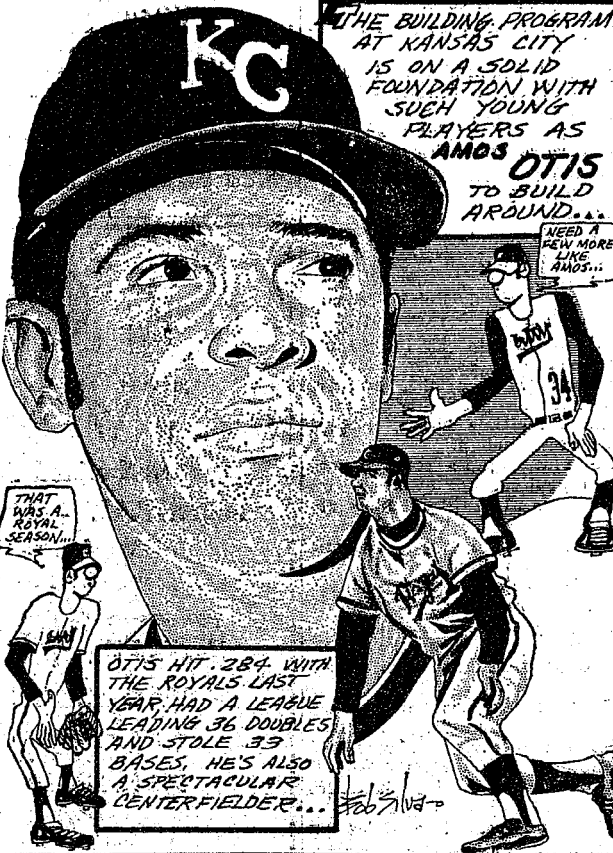
WANTED CEMENT & BLOCKWORK

All types—Poured walls, floors, drives and foundations.

CECIL CAUDILL

(517) 851-3847

SPORTS CORNER



BIKES POPULAR

Bicycle sales have risen in the last 10 years from 3.7 million to almost 7 million, with many of these being purchased for adults.

The great men and the doctors understand not the Word of God, but it is revealed to the humble and to children.

—Martin Luther.

Inverness Golf League

Standings as of Aug. 1

	Pts.
J. & S. Tool Co.	46
Chelsea Milling	45 1/2
Central Fibre	43 1/2
Seitz's Tavern	40 1/2
G. A. Sales	40
Inverness Inn	40
Lairds & Aalstrom	39
L. P. S.	38 1/2
Chelsea Lanes	36
Meabon's	35
Chelsea Lumber	31 1/2
Schumm's	29 1/2
The Pub	28
The Keglers	28 1/2
Dana Corp.	28
A. D. Mayer Ins.	28
Fitzsimon's Exc.	26 1/2
Dancer's	25

Per acre values of farmland and buildings went up 3 percent nationally in the year ended March 1, 1971.

Scramble Golf Tourney Set At Boondocks

One of the most unusual and exciting formats for a golf tournament will be featured at an upcoming event at one of the area's newest courses.

It will also be among the most lucrative for some team, as \$100 cash will go to the winners of the Boondocks Summer Scramble.

Bill Haney, who built and operates the course, has announced that his course will hold its second annual Boondocks Summer Scramble on Aug. 14-15 at its testing 9-hole layout southeast of the village of Grass Lake.

Last year several Chelsea teams finished high on the prize list and, according to Haney, a repeat of the unique event has been much in demand.

Players make up their own foursomes and play together against the field. Each team has its own captain who selects the best tee shot of the four. All four players then hit from that spot and continue hitting from the preferred shot of the four until holing out.

Thus, there is but one score for the foursome for the hole, yet each player gets to hit a good number of shots.

"Last year we had several teams of relatively high handicappers right in the thick of it for the top prizes," Haney said. "Because you have four shots to select from, one bad shot really doesn't hurt a team much. Players who shoot 50 or more for nine holes suddenly get the thrill of putting for birdies for their team on nearly every hole."

Entry fee for the event is \$4 per player, including prize fund, golf, beer, and refreshments. Teams may play additional rounds for \$3 per man and—except for the grand prize winner—a team may win more than one prize.

"Last year we had several teams play three or four rounds in a single day," Haney said. "So this year we expanded it to cover the entire week-end to give everyone a chance to enter whenever they like and as often as they like. We expect quite a turnout and if we get it we will have a large and generous prize list. For sure somebody is going to win \$100 cash."

Entries are now being accepted at The Boondocks, 13202 Curtis Rd., Grass Lake.

To keep wrought iron furniture looking its best, hose down often, or wash with warm water and a mild detergent. Rinse. In salt water areas, wash frames at least once a month.

Clinton River Canoe Guide Again Available

To assist persons who are interested in canoeing along the Clinton River, the Huron-Clinton Metropolitan Authority now has available a "Clinton River Canoeing Guide."

The printed guide, which has a black and grey cover, illustrates the most popular section of the Clinton River beginning in Oakland county from Dequindre and Avon Rds., near the Yates Cider Mill southeast of Rochester on through Macomb county to Shady-side Park in Mt. Clemens.

The guide map includes access roads, bridges, railroad tracks, scenic and rest areas on public lands bordering on the Clinton River, plus a series of helpful hints for canoeists and a chart containing distances and paddling times between major points along the approximate 20-mile route.

The free canoe guide is available by writing to Clinton River Canoe Guide, in care of Huron-Clinton Metropolitan Authority, 600 Woodward Ave., Detroit 48226 or phone 961-5385 (Detroit).

It is also available at the following park offices: Metropolitan Beach near Mt. Clemens, Stony Creek Metropolitan Park near Utica, Kensington Metropolitan Park near Milford and Hudson Mills Metropolitan Park near Dexter.

Bulldogs Lose, 12-1, in Final Game of Year

The Chelsea Bulldogs lost their final game of the season, Aug. 3, to Bolgos Farms by a score of 12 to 1.

Chelsea got their only run in the first inning on an error, two walks and a single.

Bolgors got seven runs in their half of the first on four walks, two hits and an error. They picked up two more in the second, and three more in the third.

Jack McClear was the leading hitter for Chelsea, picking up two hits in three times at bat.

Chelsea's pitchers were Jack McClear, Wayne Welton and Randy Brier. Mike Nadeau caught.

Bolgors had Mike Stevens on the mound and Tony Stahursky behind the plate.

Line Score: R H E
Chelsea 1 3 5
Bolgors 12 7 1

No greatness exists unless it is based upon principle and not upon profits.

Five Errors Bring Loss to Baseball Team

Chelsea lost to Stein & Goetz, 5 to 0, in an error-filled game played Thursday, July 26.

Stein & Goetz picked up their first run in the fourth inning on three hits and an error, adding their final four in the fifth on a walk, a hit batsman, three hits and three errors.

Chelsea's two hits were collected by Todd Sprague and Joe Aspiranti.

Ron Sweeney pitched five innings for Chelsea, striking out 11 batters. Wayne Welton pitched in the sixth and seventh innings. Chelsea's catchers were Randy Brier and Ralph Stewart.

Mike Dames pitched for Stein & Goetz. Mark Caswell caught.

Line Score: R H E
Chelsea 0 2 5
Stein & Goetz 5 8 0

Willow Creek Ladies Golf League

Standings as of July 27

	W	L
Brown's Drug Store	24	11
Town Crier Scoops	18	17
Dana Powers	17	18
Barber's Borden Belles	16 1/2	18 1/2
Spadafore's	15	20
Hickory Ridge	3 1/2	25 1/2
18 putts and under: Helen Mit- teer, 17; Marge Stephens, 17; Lois Barbour, 15; Grace Collins, 14.		

YES

WE ARE MAKING
LONG-TERM FARM
REAL ESTATE
LOANS

SEE US



P. O. Box 1006
Ph. 769-2411 5645 Jackson Rd.
Ann Arbor, Mich. 48103

COLOR FOR KIDS
Decorative maps, scrolls and travel posters make good wall hangings for children's rooms, family rooms and dens.

It's strange how the ignorant refuse to study and how the intelligent never stop.

CUT GLASS
Ornately styled cut glass reportedly became fashionable in England after a heavy tax was levied on crystal glassware in 1745 according to its weight. Deeply cut, intricate designs reduced the glassware's taxable weight.

HITCHINGHAM ELECTRIC

PHONE (313) 475-1100
449 CHELSEA-DEXTER RD. CHELSEA, MICH.

RESIDENTIAL - COMMERCIAL - INDUSTRIAL
LIGHTING and POWER

Complete Line of COMFORT-AIRE AIR CONDITIONERS

Check with us for prices before you buy.
ALL SIZES — IMMEDIATE INSTALLATION

BOWL for the fun of it...



Having Fun Lately? Bowling Is a Ball!

Put some fun in your life . . . Bowl for laughter and health at our modern, well-equipped lanes with rarely a wait. Bring the gang down!

CHELSEA LANES
1180 M-52 Phone GR 5-8141

STATE FAIR SALE

★ STOP AT THE PUMP

You receive one page of Pantry Stamps with each dollar's worth of gasoline purchased.

★ COME IN THE PANTRY

With 4 pages of Pantry Stamps you may select any of the following. "SHOP AND SAVE!"



BLUE
RIBBON
SPECIALS

FREE SPARTAN PORK & BEANS, 10-Oz. Can
MUSSELMAN'S APPLESAUCE, 16 1/2-Oz. Can

9¢ SHURFINE CATSUP, 14-Oz. Bottle
SPARTAN FRUIT DRINKS, 46-Oz. Can
(Grape - Orange - Fruit Punch)

19¢ KLEENEX TOWELS, Twin Pack
SPARTAN FAMILY NAPKINS, 180-Count Pkg.

29¢ SUNSHINE HYDROX COOKIES, 20-Oz. Pkg.
DIPSIE POTATO CHIPS, 1-Lb. Bag

Fill Up Often - Use Your Stamps - Enjoy Big Savings!

PUMP & PANTRY

OPEN 6 a.m. to 11 p.m. 7 DAYS A WEEK

295 S. Main St., Chelsea

Phone 475-7051



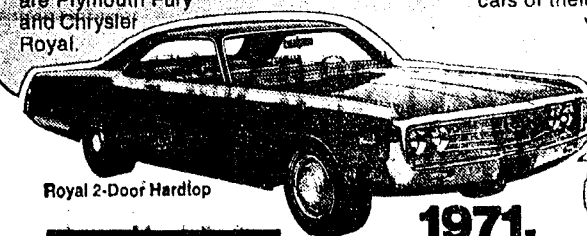
While some years are good car years, 1971 has been a

VINTAGE YEAR FOR CHRYSLER-PLYMOUTH

ONE OF OUR BEST YEARS.
It takes something special to come up with a Vintage Year. But that's what '71 has been for Chrysler-Plymouth. Our slogan "Coming Through" had a lot to do with it, because it's our pledge. To come through with the style, size, price and quality you can live with for years to come. Two good examples are Plymouth Fury and Chrysler Royal.

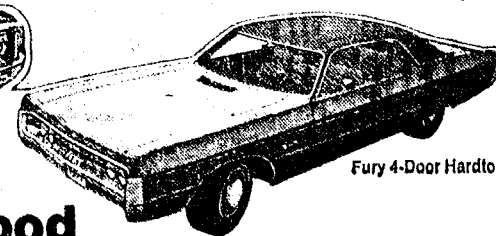
OUR FINEST OF THE BIG.
Plymouth Fury and Chrysler Royal are big ways to go for people who want the comfort and space befitting their style of living. Both have Torsion-Quiet Ride (which not only quiets road noise but gives you firm, sure handling). Both have a large interior and trunk space. And both turned out to be the finest cars of their kind in this vintage year.

NOW, A GREAT SELECTION COMING THROUGH FINAL CLEARANCE PRICED.
'71 has been a vintage year for Chrysler-Plymouth. Quality shines and shows in every line. A drive in one of our '71 Chryslers or Plymouths will prove how well we've come through. Check our great selection. We think you'll agree, quality cars at final clearance prices is what "Coming Through" is all about. For us. For you.

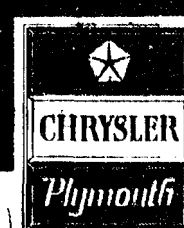


Royal 2-Door Hardtop

1971.
It was a very good year.



Fury 4-Door Hardtop



Coming Through.

G. A. SALES & SERVICE · 1185 MANCHESTER ROAD

UCC Assumes Control of Housing Units for Retirees

Saginaw—United Church Manors, a ministry of the Michigan Conference of the United Church of Christ, has assumed control of two Saginaw housing projects for retirees. It was announced this week. Transfer of Essex Manor on Harold St. and Westchester Village on W. Michigan Ave., was made by resignation of the board of directors of the former sponsor and the election of a new board of trustees comprised of the trustees of United Church Manors.

In announcing the change, Kenneth V. Ohl of Lansing, president of United Church Manors, wrote residents of the two projects that "residence and management poli-

cies of the projects will continue substantially as before, although plans are already under way for improving many of the facilities and services."

United Church Manors was incorporated in July, 1966 to provide housing for the elderly in Michigan. In June of this year, ground was broken at East Lansing for Burcham Hills Retirement Center, a full-service (residence building with attached health and therapy facility) center and residents will begin occupying this Center in 1973. United Church Manors, whose offices are in Ann Arbor at 1170 Earhart Rd., is served by a qualified staff with experience in design, administration, financing, and promotion of retirement residences. "We intend to bring all this expertise to both of the Saginaw projects," said Ohl. Essex Manor opened in 1970 and offers 24 efficiency apartment units, 48 studio units and 24 one-bedroom apartments in a three-story building on a 4.4 acre site. Westchester Village, also opened in 1970, consists of 88 one-story duplex apartment buildings on approximately 10½ acres. It includes 118 efficiency apartments and 68 one-bedroom units. All apartments at both projects have kitchenette facilities.

Magic Mirror Beauty Salon

Open Monday thru Friday
9 a.m. to 9 p.m.
Saturday, 8 a.m. to 3 p.m.

PHONE 665-0816



You'll have the world on a string with **SPINNER STRING ART**. It's easy... fast... and fun for the whole family. Great idea for your vacation.

Only \$5.00

P.S.—Also many crewel kits are in.

Tailfeather Boutique

105 N. Main

Chelsea

An eye for good taste!

My, Junior sure goes for a t-a-l glassful of our better-tasting milk which gives him plenty of pep and keeps him mentally alert! Grown-ups, as well as youngsters, appreciate the nourishing goodness... flavorful vitality—that makes our milk... yours!

WEINBERG DAIRY
Phone GR 5-5771

Angela C. Cavadas Becomes Bride of Thomas T. Smith July 23

Angela Christine Cavadas became the bride of Thomas T. Smith Friday, July 23, at St. Mary's Catholic church in Chelsea in a ceremony performed by the Rev. Francis B. Wahowiak.

Angela is the daughter of Mrs. George Prappas, Ft. Pierce, Fla. The bridegroom's parents are Mr. and Mrs. Charles Smith, Jr., 6693 Lingane Rd.

The bride wore a wedding dress fashioned of charmeuse organza styled with a fitted waist and bishop sleeves. The gown and the cathedral-length mantilla were trimmed in imported alencon lace. She carried a cascade of white roses and stephanotis accented with ivy.

Mrs. Greg Stephens was the matron of honor. She wore a Nile green sateen gown featuring bishop sleeves and an empire waist trimmed in alencon lace. She carried a French nosegay of yellow and white daisies and baby's breath with white ribbon streamers.

Bridesmaids were Miss Denise Petch, a niece of the bride, Miss Lynn Smith, sister of the bridegroom, and Miss Debbie Pierson. They wore yellow gowns similar to that of the matron of honor, and also carried French nosegays of white and yellow daisies and baby's breath.

The flower girl, Cindy Walker, a niece of the bride, wore a dress identical to that of the matron of honor, and carried a basket bouquet of yellow and white daisies with ribbon streamers.

Vocalist for the wedding was Miss Chris Alber who sang "One Hand, One Heart," and "We've Only Just Begun." She was accompanied by Dwight Bolanowski who also played the theme from Love Story.

Mrs. Prappas wore a blue satin brocade sheath dress with matching coat and white accessories for her daughter's wedding.

The bridegroom's mother chose a baby blue crepe A-line dress with a matching lace coat and silver accessories.

Best man was Wayne Stahl of Pinckney. Groomsmen were Rodney Houle, Junior Borders and Carl Raney.

A reception following the wedding was held at the Chelsea Rod & Gun Club. Miss Lynda Cobb attended the guest book. Miss Linda Wireman attended the cake, and Miss Gina Shoemaker served coffee and punch.

A week-end wedding trip to Niagara Falls followed the reception. The bride's going-away costume consisted of a white brocade hot pants ensemble trimmed in baby blue alencon lace.

The new Mr. and Mrs. Smith will make their home at 60 Cedar Lake Rd.

Personal Notes

George Young is a patient in room 135 at the Chelsea Medical Center.

Richard Young, son of Mr. and Mrs. George Young, and his family visited his parents for 10 days recently. Young is from San Jose, Calif.



Mrs. Thomas Smith

Fewer Smokers Found Among Big 10 Alumni

East Lansing—Big Ten alumni tend to be non-smokers, high consumers of alcohol and enjoy greater affluence than the average U.S. householder, according to a survey conducted by a New York research firm to help guide advertisers in the use of alumni magazines.

More than 83 percent of the alumni of Big Ten universities use or serve alcoholic beverages regularly (more than once a month), compared to 48 percent of the U.S. total. Domestic beer heads the list of favorite beverages, followed by bourbon, domestic wine, scotch, gin, vodka and imported wine.

At least one new car was purchased in the past five years by about 84 percent of the respondents, compared to 44 percent nationwide.

In one out of two alumni households, someone had vacationed in Canada in the past five years, and one out of four households had been represented in Europe.

Three-fourths of the alumni own stocks, 27 percent of which are valued at \$10,000 or more.

Almost 20 percent belong to a country or golf club, compared to about 4 percent nationally, and 15 percent own some type of boat.

Some 64 percent of the readers are non-smokers. Only 21 percent currently smoke cigarettes, compared with 38 percent nationally.

SPANISH MOSS

Spanish moss is an epiphyte that feeds on rain, air and dust. Neither a moss, nor Spanish, the feathery plant claims distant kinship with the pineapple.

Uniqueness Is Valuable Trait In Personality

Many women, particularly young homemakers, wonder about their value in today's world. But each person's uniqueness is her real value, according to a Michigan State University specialist.

"Because you are unique, every person you meet profits from that meeting," said Mrs. Gail Imig, extension family life specialist.

"If you get terribly enthusiastic about raising petunias, and no one else does that's fine. You are then being the person that no one else is in the world is."

"Your personality is the sum total of the way you look, act, think and feel. It is every little thing that makes you YOU. Although you may think you are a lot like your friends and family, there are many things about you that keep you distinct from them," the specialist said.

"If you want people to accept you and to like you, be yourself," Mrs. Imig stressed. Be absolutely sincere at all times. Don't put on airs, or become affected. Trying to imitate someone else will only end in failure, because you don't have the same characteristics the other person has."

One of the most refreshing things in the world is a person who isn't afraid to be himself, the specialist said. You're the only person with the qualities, background, and ideas that you have. If you try to be someone else, no one will ever know what a unique person you are.

Accept yourself as you are, and then share that self. Give other people the benefit of knowing your ideas, your ambitions, of sharing your enthusiasm for your favorite things.

And the specialist added, once you accept yourself, you'll not only find it much easier to accept others, but you'll also discover that you're someone others like, and want to be with.

"You are a very important person," Mrs. Imig said. "Knowing and believing that can change your whole outlook on life."

Struggle Emerging on Question of Control Over Junior Colleges

East Lansing—A struggle over the control of junior colleges is emerging between local communities and state governments, the head of the American Association of Junior Colleges warned recently at Michigan State University.

"As states provide more funds, will they also play a bigger role in deciding curriculum, recruitment of students, admissions criteria, exam policies and the firing of faculty?" Dr. William G. Shannon asked 100 junior college presidents and other educators at MSU's Kellogg Center.

Dr. Shannon pointed out that at least a half dozen states now have almost complete financial control of their community colleges.

Although there are about 200 kinds of sausage and ready-to-serve meats, all of them can be classified into six types according to processing method: cooked and smoked; just cooked; cooked meat specialties; and dry sausages.

U-M Summer Band Plans Free Concert

University of Michigan Summer Session Symphony Band will present an outdoor concert near the School of Music on Thursday, Aug. 5, at 7 p.m. In the event of rain the concert will be held at 8 p.m. in Hill Auditorium. The concert will be under the direction of Professors William Revelli and George Cavender.

Presented as a part of the 23rd annual National Band Director's Conference which is in session on campus from Aug. 2 to 5, the concert is presented free of charge.

Works to be conducted by Professor Cavender include: "Centennial Fanfare March," by Nixon; "Blessed Are They," from "A German Requiem" by Brahms; "An American Overture," by Jenkins; and the concert march "Villabella," by Williams.

Dr. Revelli will conduct: "A Festival Prelude," by Reed; "Trauersinfonie," by Wagner; "Marche Hongroise-Rakoczy," from the "Damnation of Faust" by Berlioz; "Two Marches for the Sultan Abdul Medjid," by Rossini and Donizetti and a "Mancini Medley," by Mancini.

Another special attraction on the concert program will be a cornet trio composed of Charles Way of Poland, O., John Larkin of Ann Arbor, and Rodney Hamman of Birmingham. They will perform "The Three Trumpeters" by Agostini under the direction of Professor Revelli.

Internationally famous tuba soloist Harvey Phillips of New York City will appear with Dr. Revelli and the Summer Session Symphony Band performing Ralph Vaughan Williams "Concerto for Tuba."

Personal Notes

Mr. and Mrs. Leroy Satterthwaite attended a family gathering at the home of Mr. and Mrs. Dale Fosdick in Ann Arbor Sunday afternoon in honor of Mr. and Mrs. Bernard Romp. Mrs. Romp is the former Clara Pfizenmaier of Chelsea. Also present were Mr. and Mrs. Eugene Kuhl and family from California.

The Chelsea Standard, Thursday, August 5, 1971 11

CHELSEA VILLAGE COUNCIL PROCEEDINGS

August 3, 1971
Regular Session
This meeting was called to order at 8:00 p.m. in the Council Room. Present: President Fulks, Clerk Harvey, Administrator Webster, Trustees Borton, Gorton, Musbach, Dmoch, Boylan. Absent: Trustee Chandler. Others present for the meeting were Richard Laban and Charles Ritter.
A letter was read from Layne Northern Company, Inc., regarding their condition inspection of the four oldest iron removal filters at the water treatment plant. The report was submitted to water engineers, for a recommendation.
A discussion was held on a request from the Chelsea Community Fair Board to make Old Manchester Rd. a one-way street during the fair to help eliminate traffic congestion.
Motion by Dmoch, supported by Borton, to make Old Manchester Rd. one-way with traffic going south from Old US-12 to M-52 during the fair. Roll call: Yeas all. Motion carried.
Motion by Borton, supported by Dmoch, to transfer \$20,000.00 from the Electric & Water Department to the Village General Fund. Same sum to be repaid upon receipt of Village taxes. Roll call: Yeas all. Motion carried.
The Council was informed that since the State Tax Commission ruled in favor of Washtenaw County on tax assessments the village tax statements are now being prepared and will be mailed in approximately two weeks.
Motion by Musbach, supported by Gorton, to authorize and direct the Clerk to issue checks in payment of bills as submitted. General Fund \$4,113.34. M-14 M-

Washtenaw Farmers High in Corn Production

Washtenaw county farmers harvested 47,900 acres of corn for grain in 1970, according to Arvin Gorton, of the Michigan Crop Reporting Service. Production amounted to 4,224,000 bushels, an average of 88.2 bushels per acre. This compares to the 1969 crop of 3,722,000 bushels from 43,200 acres.

Budge says that Washtenaw county is one of the larger corn producing counties in Michigan.

CHELSEA FINANCE CORP.

\$25 to \$1,000

For Any Worthwhile Purpose

See or Call **FRANK HILL** at 475-8631

111 PARK STREET
CHELSEA, MICH.

VILLAGE BEAUTY SALON

LORETTA PANNONE, Owner-Operator
CINDY - EULA - MARGE - ARLENE

107 N. MAIN

PHONE 475-5421

OPEN MONDAY THRU SATURDAY
Evenings, Wednesday and Thursday

Get Free Decorator Counsel



Professional decorating advice can be costly... but, not here. We'll make it easy for you to select the "right" Armstrong floor for any room in your home.

And it won't cost you a penny. Our staff is Armstrong-trained to work out the decorating answers you're looking for.

Visit us this week to sample their suggestions for the fresh, new floor styles and patterns that will make your rooms sing.

Merkel's



Open Mon. & Fri. Until 9 Ph. 475-8621

daily interest

FROM DATE OF DEPOSIT TO DATE OF WITHDRAWAL

plus **4 1/2%**
HIGHEST INTEREST RATES

PASSBOOK SAVINGS ACCOUNT
Highest Passbook Interest Rate—Money Immediately Available
PASSBOOK CERTIFICATE ACCOUNTS
One Year Maturity in Amounts of \$1,000 or More
PASSBOOK CERTIFICATE ACCOUNTS
Three, Four, or Five Years Maturity in Amounts of \$5,000 or More

Accounts insured to \$50,000 by F.S.L.I.C.

AAFE

the savings and loan specialists

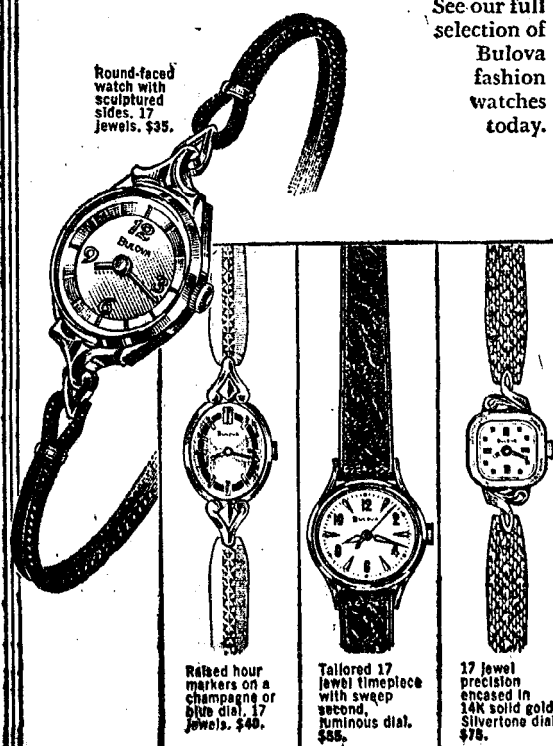
Liberty at Division, West Stadium at Pauline,
Huron Parkway at Platt, Plymouth at Nixon.

ANN ARBOR FEDERAL SAVINGS

Member: Federal Home Loan Bank System • Federal Savings and Loan Insurance Corporation

Bulova fashions a wardrobe of watches

"Wear a Bulova" and you wear a watch that goes anywhere. All the time. Or be a little extravagant. Build up a wardrobe of watches and have the most fashionable wrist in town. See our full selection of Bulova fashion watches today.



Winans Jewelry

Two CHS Wrestlers Participating in Clinic At Olivet College

Two high school students from Chelsea, are participating in the second session of the ninth annual Spartan Wrestling Clinic at Olivet College this week.

Tom M. McKernan, 20179 Mc Kernan Dr., and Randall V. Seitz, 111 Arden Lane are participating in the clinic under the direction of Grady Peninger, head wrestling coach at Michigan State University.

Also on the staff are Tommy Evans, coach at the University of Oklahoma, and Vaughan Hitchcock, wrestling coach of Cal. Poly.

District Court Proceedings

In 14th district court this week, Verne Moeckel, Munnith, pled guilty to driving under the influence of liquor. Sentencing is scheduled for Aug. 30 in Chelsea.

William Glaze, Saline, was ordered to pay \$75 fine and costs or spend 10 days in jail after he pled guilty to drag racing.

Dennis Helm, Ann Arbor, pled guilty to a charge of failure to yield the right of way. He paid \$16 fine and costs.

Thomas Foltz, Whitmore Lake, was given 30 days probation after pleading guilty to driving on a

suspended license. He was also ordered to pay \$50 fine and costs, and to spend five days on the Whitmore Lake Police Department work program.

Richard Sims, Detroit, pled guilty to speeding 43 mph in a 25 mph speed zone, and paid \$27 fine and costs.

Earl Vinson pled guilty to impaired driving. He will be sentenced Aug. 31 in Saline.

Howard Marquette, Saline, pled guilty to driving under the influence of alcohol. He will be sentenced Aug. 31 in Saline.

Richard Heath, Saline, was found guilty of violating the basic speed law. He paid \$21 fine and costs.

Darlene Beeman, 16610 Waterloo Rd., Chelsea, pled guilty to leaving the scene of a property damage accident and was ordered to pay \$25 fine and costs.

Betty Benson, Detroit, and Richard Bowen, Cleveland, O., were bound over to circuit court on charges of kidnapping and armed robbery. Both are being held at the Washtenaw County Jail in lieu of \$25,000 bond. Betty Benson will appear in Circuit Court on Aug. 13, while Bowen is scheduled to appear Aug. 20.

Philip E. D'Angelo, Whitmore Lake, was bound over to Circuit Court following examination in District Court on a charge of indecent exposure.

Rich Stock, Plymouth, had a guilty plea entered for him by the court on a charge of making obscene phone calls. He will be sentenced Aug. 26 in Saline.

Howard Robinson, Saline, paid \$16 fine and costs after pleading guilty to failure to yield the right of way.

Phillip Burkhardt waived examination on a charge of possession of marijuana. He will appear in Circuit Court on Aug. 6. Bond was set at \$1,000.

Steven Benko, Whitmore Lake, was found guilty of using indecent language. He will be sentenced Aug. 10.

Richard A. Hines, Whitmore Lake, was found guilty of paying \$125 fine and costs within 45 days. A 90-day jail sentence was suspended, but Hines must spend 10 days on the Whitmore Lake Police Department work program.

At Hirt Coming

For MSU Homecoming

East Lansing—Al Hirt and his band will appear at half-time of Michigan State University's Homecoming game with Iowa Oct. 23, and lead MSU's "Parade of Bands" concert that evening.

Subscribe today to The Standard.

Court Hearing Set on Knife Assault Case

Vivian Marie Ballanger, of 8738 Glenwood, Pinckney, accused of assault with intent to kill in the knife wounding of Park Ranger Richard D. Foster of Chelsea, last June 4, will appear for hearing before Ann Arbor Circuit Court on Monday, Aug. 9.

At her arraignment on June 11, she stood mute and a plea of not guilty was entered for her. The court signed a petition to have her committed for psychiatric examination.

The assault on Ranger Foster came as a result of an attempt to subdue and disarm the accused as she threatened to burn down her house and car following family trouble on June 4. During the time she also slashed the leg of Washtenaw County Sheriff's Deputy John Steigerwald, according to the various police agencies called to the scene.

WCC Offers Literature of Bible Course

In September, Washtenaw Community College is offering a course entitled "English 207—The Literature of the Bible" to area residents who might be interested.

In this course, the Old Testament will be seen as the literary expression of the religious life of ancient Israel. Its literature takes many forms, and the student will discover new meaning in them.

"Despite the variety in content as well as in viewpoint, a significant unity will be observed centering in belief in the God of judgment and redemption," states the course description.

"The instructor of the course is a person who appreciates the Bible for more than its literary value, yet he will present material with such objectivity that congregations of all faiths will want their members to enroll in it," the college states.

Registration is being accepted now for the course which meets on Mondays and Wednesdays from 7 to 8:30 p.m. beginning in September. Three hours of college credit, transferable to EMU or U-M may be earned. The fee is \$37.50.

Birth Control Pill

Now Available for Cows

A birth control pill for cows followed by a shot of a hormone may provide the ovulation control that dairy cattle researchers and farmers seek.

Feeding one milligram of MGA for 14 days followed by an injection of HCG (a leutinizing hormone) resulted in ovulation by 23 of 25 cows within about a six-hour interval, according to a recent report by MSU dairy scientists.

"Using HCG provides the desired grouping of ovulation time we are seeking to possibly eliminate the need for heat detection," said Dr. Harold Hafs, MSU dairy scientist.

HOT POTATOES

If your home prepared French fried potatoes are soggy or greasy, you may not have the frying pan hot enough. Temperature of the fat should be 375 to 385 degrees, according to the U.S. Department of Agriculture.

A thousand pounds of beef on the hoof turns into less than a hundred pounds of sirloin, T-bone, club and Porterhouse steaks.



In case of fire do you have "ready money" to rebuild?
Better get

Auto-Owners

Fire Insurance

See your A-O Man

**A. D. MAYER
AGENCY, INC.**

"Your Protection Is Our Business"
115 Park St. Chelsea
Phone 479-5061

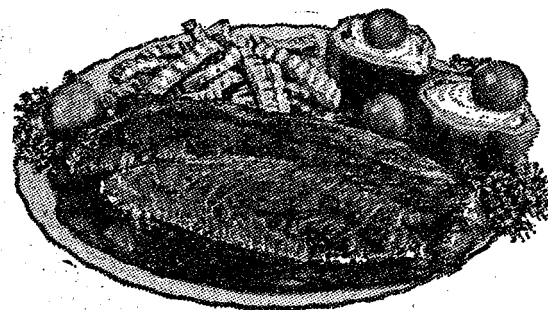
**Auto-Owners
INSURANCE COMPANY**
Home Office at Lansing, Michigan

WE GIVE WE GIVE WE GIVE WE GIVE WE GIVE WE GIVE WE GIVE WE GIVE WE GIVE

YOU DESERVE BOTH

1 BIG CASH SAVINGS 2 S&H GREEN STAMPS

Fresh, Lean
GROUND BEEF
79¢ lb.



Lean, Meaty
Spare Ribs . . . 85¢ lb.

LONGHORN CHEESE
99¢ lb.

Colby Sharp Cheese
\$1⁰⁹ lb.

SPARTAN PICKLES
DILL - KOSHER - POLISH

48-Oz. Jar **59¢**

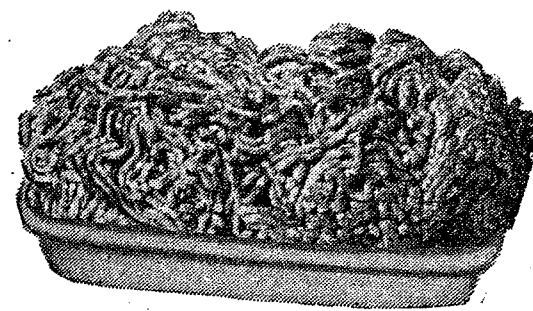
**FROSTIE
ROOT BEER**
8 10-Oz. Returnable Bottles **49¢**
Plus Deposit

SPARTAN
POTATO CHIPS
1-Lb. Bag **49¢**

KRAFT'S
MIRACLE WHIP
48-Oz. Jar **99¢**

RICK'S MARKET
"Your Spartan Store"

M-52 North of Chelsea Phone 475-2898
Open 8 a.m. to 10 p.m. 7 Days A Week With Everyday Low Discount Prices



Tender, Juicy
ROUND STEAK
\$1⁰⁹ lb.

Fresh, Tasty
Ring Bologna .80¢ lb.

CHEESE & SALAMI
\$1¹⁵ lb.

GRADE A HOMOGENIZED

MILK
79¢ gal.

Watermelons
20-lb. and up

95¢ ea.

HOME - GROWN

TOMATOES
25¢ lb.

SPARTAN
BREAD
4 1 1/4-Lb. Loaves **\$1**

GRADE A FRESH
E G G S
Large Size **45¢ doz.**

SPECIAL

thru Wednesday, Aug. 11, 1971

**SUNDAE
SUPREME**

59¢

Home of fine Brazier Foods.



brazier.

901 S. MAIN ST., CHELSEA PHONE 475-2677

CHELSEA'S 15th ANNUAL

SIDEWALK DAYS

Bigger and Better Than Ever!

**FRIDAY and SATURDAY
AUGUST 13-14**

Friday - 8:30 a.m. to 9 p.m.

Saturday - 8:30 a.m. to 6 p.m.

Your budget will get plenty of extra mileage at the low bargain prices you'll find on good seasonal merchandise of every kind. Many items have been specially purchased for this big annual bargain day event.



**COME EARLY
BOTH DAYS**

and
Bring the family.

There are bargains
for everyone!